

Select Step II Collection



DESIGN

Product Type:	Glue Down LVT
Overall Thickness:	3 mm (.12")
Wear Layer:	20 mil (0.5 mm)
Finish:	M-Force
Edge Profile:	Microbevel
Size:	184.15mm x 1219.2mm (actual) 7.25" W x 48" L (nominal)
Square Feet Per Carton:	36.25 sf/ctn
Pieces Per Carton:	15 pieces / ctn
Pounds per carton:	42.3 lbs/ctn
Installation Method:	Glue Down
Recommended Adhesive:	M95.0 Resilient Flooring Adhesive, M99 Resilient Flooring Adhesive, or M700 Adhesive

PERFORMANCE

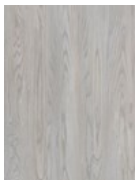
Construction:	Commercial Grade Luxury Vinyl Tile
Classification:	ASTM F1700 - Class III, Type A - Smooth, Type B - Embossed
Squareness:	ASTM F 2421 - Passes - ±0.10" max
Size and Tolerance:	ASTM F2421 - Passes - ±0.016"/linear foot
Thickness:	ASTM F386 - Passes - as specified ±0.005"
Flexibility:	ASTM F137 - Passes - 1" mandrel
Dimensional Stability:	ASTM F2199 - Passes - 0.020"/linear foot max
Static Load:	ASTM F970 - Passes, modified at 1000 psi
Residual Indentation:	ASTM F1914 - Passes - Average less than 8% maximum single reading 10%
Resistance To Chemicals:	ASTM F1914 - Passes - Average less than 8% maximum single reading 10%
Resistance To Light:	ASTM F1515 - Passes - E <8
Resistance To Heat:	ASTM F1514 - Passes - E <8
Critical Radiant Flux:	ASTM E648 - Class 1 (>0.45 W/cm2)
Smoke Density:	ASTM E662 Part A - Less than 450

SUSTAINABILITY

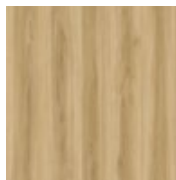
Certification:	FloorScore® certified
Virgin Vinyl:	Yes

SERVICE

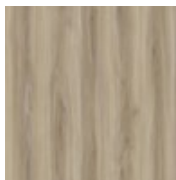
Warranties:	Limited 15 Year M-Force Commercial Warranty
-------------	---



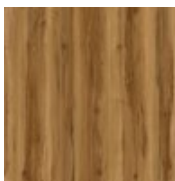
W729
Luxe



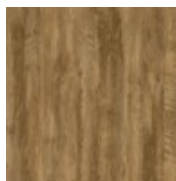
W731
Caramel



W738
Ice Dreams



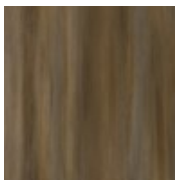
W833
Vein Narrative



W838
Rustic Elegance



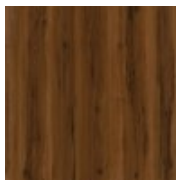
W853
Warmth



W858
Safe-Haven



W859
Cozy



W863
Heirloom

Select Step II Collection



W938
Aged Smoked



W949
Urban



W969
Iron Ore