

Select Step II Collection



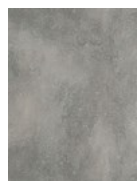
S719
Concrete Goals



S818
Nature's Influence



S878
Clean Slate



S929
Riverside



S939
Stone Cold



S945
Stepping Stone



S948
On the Rocks



S959
Taken for Granite

DESIGN

Product Type:	Glue Down LVT
Overall Thickness:	3 mm (.12")
Wear Layer:	20 mil (0.5 mm)
Finish:	M-Force
Edge Profile:	Microbevel
Size:	457.2mm x 914.4mm (actual) 18" W x 36" L (nominal)
Square Feet Per Carton:	36 sf/ctn
Pieces Per Carton:	8 pieces / ctn
Pounds per carton:	42 lbs/ctn
Installation Method:	Glue Down
Recommended Adhesive:	M95.0 Resilient Flooring Adhesive, M99 Resilient Flooring Adhesive, or M700 Adhesive

PERFORMANCE

Construction:	Commercial Grade Luxury Vinyl Tile
Classification:	ASTM F1700 - Class III, Type A - Smooth, Type B - Embossed
Squareness:	ASTM F 2421 - Passes - ± 0.10 " max
Size and Tolerance:	ASTM F2421 - Passes - ± 0.016 "/linear foot
Thickness:	ASTM F386 - Passes - as specified ± 0.005 "
Flexibility:	ASTM F137 - Passes - 1" mandrel
Dimensional Stability:	ASTM F2199 - Passes - 0.020"/linear foot max
Static Load:	ASTM F970 - Passes, modified at 1000 psi
Residual Indentation:	ASTM F1914 - Passes - Average less than 8% maximum single reading 10%
Resistance To Chemicals:	ASTM F1914 - Passes - Average less than 8% maximum single reading 10%
Resistance To Light:	ASTM F1515 - Passes - E <8
Resistance To Heat:	ASTM F1514 - Passes - E <8
Critical Radiant Flux:	ASTM E648 - Class 1 (>0.45 W/cm ²)
Smoke Density:	ASTM E662 Part A - Less than 450

SUSTAINABILITY

Certification:	FloorScore® certified
Virgin Vinyl:	Yes

SERVICE

Warranties:	Limited 15 Year M-Force Commercial Warranty
-------------	---