



**DESIGN**

---

Product Type:	<b>Broadloom</b>
Construction:	<b>Tufted</b>
Minimum Sq. Yd.:	<b>No Minimum</b>
Surface Texture:	<b>Textured Patterned Loop</b>
Gauge:	<b>1/10 (39.37 rows per 10 cm)</b>
Density:	<b>6,712</b>
Weight Density:	<b>147,664</b>
Stitches Per Inch:	<b>10.0 (39.37 per 10 cm)</b>
Finished Pile Thickness:	<b>.118" (3.00 mm)</b>
Dye Method:	<b>Solution Dyed / Yarn Dyed</b>
Backing Material:	<b>Weldlok®</b>
Fiber Type:	<b>Colorstrand® Nylon</b>
Face Weight:	<b>22.0 oz. per sq. yd. (746 g/m2)</b>
Pattern Repeat:	<b>.50" (W) x .75" (L)</b>
Width:	<b>12' width (3.66 m)</b>
Soil Release Technology:	<b>Sentry Soil Protection</b>
Foot Traffic Recommendation TARR:	<b>Severe</b>

**SUSTAINABILITY**

---

IAQ Green Label Plus:	<b>Green Label Plus 8216</b>
Pre-Consumer Recycled Content:	<b>51%</b>
NSF 140:	<b>Gold</b>
Declare Label:	<b>Declared Red List Free</b>

**PERFORMANCE**

---

Static:	<b>AATCC-134 Under 3.5 KV</b>
Flammability:	<b>ASTM E 648 Class 1 (Glue Down)</b>
Smoke Density:	<b>ASTM E 662 Less than 450</b>

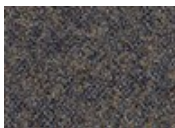
**SERVICE**

---

Warranties:	<b>Lifetime Limited Wear Warranty, Lifetime Static</b>
-------------	--------------------------------------------------------



7565  
Blue Ridge



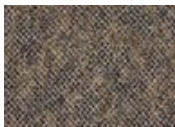
7588  
Boston Harbor



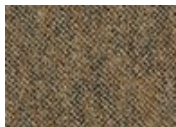
7828  
Sun Valley



7839  
Gulf Coast



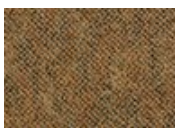
7847  
DuPont Circle



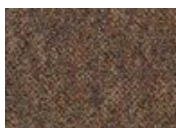
7848  
Grand Canyon



7852  
Painted Desert



7856  
Goldengate Bridge



7872  
Amelia Island



7876  
Redwood Forest



7878  
Big Sur



7948  
Mineral Springs



7968  
Stone Mountain



7988  
Pikes Peak