



DESIGN

Tufted Pile Weight:	20.0 oz. per sq. yd. (678 g/m ²)
Product Type:	Broadloom
Construction:	Tufted
Minimum Sq. Yd.:	No Minimum
Surface Texture:	Level Heathered Loop
Gauge:	1/10 (39.37 rows per 10 cm)
Density:	5,220
Weight Density:	105,966
Stitches Per Inch:	9.7 (38.19 per 10 cm)
Finished Pile Thickness:	.140" (3.56 mm)
Dye Method:	Solution Dyed
Backing Material:	Weldlok®
Fiber Type:	PermaStrand Olefin
Pattern Repeat:	None
Width:	12' width (3.66 m)
Soil Release Technology:	Sentry Plus
Foot Traffic Recommendation TARR:	Moderate

SUSTAINABILITY

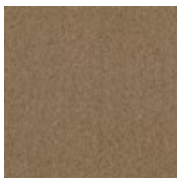
IAQ Green Label Plus:	CRI Green Label Plus GLP1254
NSF 140:	Weldlok - NSF 140 Gold
Declare Label:	Declared Red List Free

PERFORMANCE

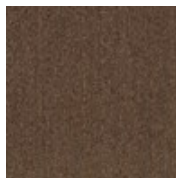
Static:	AATCC-134 Under 3.5 KV
Flammability:	ASTM E 648 Class II (Glue Down)
Smoke Density:	ASTM E 662 Less than 450

SERVICE

Warranties:	10 Year Limited Wear Warranty, 10 Year Limited Colorfastness to Light, 10 Year Limited Colorfastness to Atmospheric Contaminants, 10 Year Limited Stain Warranty, 10 Year Limited Static
-------------	--



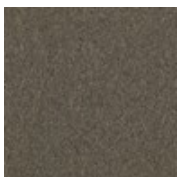
741 Sandstone



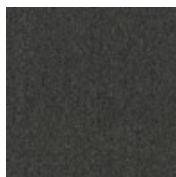
869 Calico



949 Sterling



968 Ash Gray



979 Charcoal