



DESIGN

Product Type:	Tile
Construction:	Tufted
Minimum Sq. Yd.:	No Minimum
Surface Texture:	Textured Multi Colored Loop
Gauge:	1/12 (47.00 rows per 10 cm)
Density:	6,727
Weight Density:	124,455
Stitches Per Inch:	10.6 (41.73 per 10 cm)
Finished Pile Thickness:	.099" (2.51 mm)
Dye Method:	Solution Dyed
Backing Material:	EcoFlex ICT
Fiber Type:	Colorstrand® SD Nylon
Face Weight:	18.5 oz. per sq. yd. (631 g/m2)
Pattern Repeat:	Not Applicable
Size:	24" x 24" (.6096 m x .6096 m)
Installation Method:	QuarterTurn, Monolithic, VerticalAshlar
Soil Release Technology:	Sentry Soil Protection
GSA Stain Release Rating:	Pass
Foot Traffic Recommendation TARR:	Severe

SUSTAINABILITY

IAQ Green Label Plus:	Green Label Plus 1098
Pre-Consumer Recycled Content:	48%
NSF 140:	Gold
Declare Label:	Declared

PERFORMANCE

Static:	AATCC-134 Under 3.5 KV
Flammability:	ASTM E 648 Class 1 (Glue Down)
Smoke Density:	ASTM E 662 Less than 450

SERVICE

Warranties:	Lifetime Limited Carpet Tile Warranty, Lifetime Limited Colorfastness to Light, 10 Year Limited Colorfastness to Atmospheric Contaminants, 10 Year Limited Stain Warranty, Lifetime Static
-------------	--



7356 Meadow Grass



7379 Ember



7546 Flora



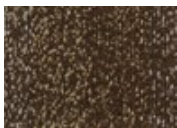
7568 Tributary



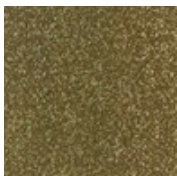
7579 Big Sky



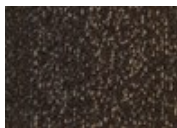
7721 Birchbark



7861 North Woods



7876 Timber



7889 Woodland



7939
Ravine



7958
Echo Valley



7965
River View