



DESIGN

| | |
|-----------------------------------|--|
| Product Type: | Tile |
| Construction: | Tufted |
| Minimum Sq. Yd.: | No Minimum |
| Surface Texture: | Textured Patterned Multi Colored Loop |
| Gauge: | 1/12 (49.00 rows per 10 cm) |
| Density: | 4,433 |
| Weight Density: | 73,142 |
| Stitches Per Inch: | 11.0 (43.31 per 10 cm) |
| Finished Pile Thickness: | .134" (3.40 mm) |
| Dye Method: | Solution Dyed / Yarn Dyed |
| Backing Material: | EcoFlex ICT |
| Fiber Type: | Colorstrand® Nylon |
| Face Weight: | 16.5 oz. per sq. yd. (559 g/m2) |
| Pattern Repeat: | Not Applicable |
| Size: | 24" x 24" (.6096 m x .6096 m) |
| Installation Method: | QuarterTurn, VerticalAshlar, Monolithic, BrickAshlar |
| Soil Release Technology: | Sentry Plus |
| GSA Stain Release Rating: | Psss |
| Foot Traffic Recommendation TARR: | Severe |

SUSTAINABILITY

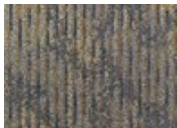
| | |
|--------------------------------|-----------------------|
| IAQ Green Label Plus: | Green Label Plus 1098 |
| Pre-Consumer Recycled Content: | 48% |
| NSF 140: | Gold |
| Declare Label: | Declared |

PERFORMANCE

| | |
|----------------|--------------------------------|
| Static: | AATCC-134 Under 3.5 KV |
| Flammability: | ASTM E 648 Class 1 (Glue Down) |
| Smoke Density: | ASTM E 662 Less than 450 |

SERVICE

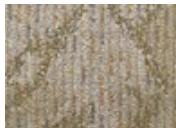
| | |
|-------------|--|
| Warranties: | Lifetime Limited Carpet Tile Warranty, Lifetime Static |
|-------------|--|



7575 Hypothesis Slate



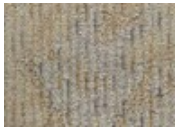
7585 Introspective Blue



7671 Reflective Bronze



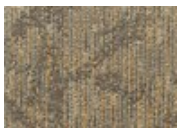
7678 Analyzing Olive



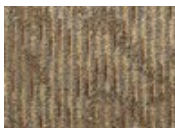
7838 Intellectual Beige



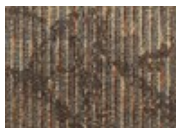
7853 Insightful Greige



7855 Dynamic Taupe



7873 Thinking Tawny



7883 Recognition Brown



7973
Solution Charcoal



7975
Cognition Grey



7989
Synthesis Black