



**DESIGN**

Product Type:	Tile
Construction:	Tufted
Minimum Sq. Yd.:	No Minimum
Surface Texture:	Textured Patterned Loop
Gauge:	1/12 (47.00 rows per 10 cm)
Density:	4,896
Weight Density:	83,232
Stitches Per Inch:	11.5 (45.28 per 10 cm)
Finished Pile Thickness:	.125" (3.18 mm)
Dye Method:	Solution Dyed / Yarn Dyed
Backing Material:	EcoFlex ICT
Fiber Type:	Colorstrand® Nylon
Face Weight:	17.0 oz. per sq. yd. (576 g/m2)
Pattern Repeat:	Not Applicable
Size:	24" x 24" (.6096 m x .6096 m)
Installation Method:	Monolithic, VerticalAshlar, BrickAshlar, QuarterTurn, MultiDirectional
Soil Release Technology:	Sentry Plus
Foot Traffic Recommendation TARR:	Heavy

**SUSTAINABILITY**

IAQ Green Label Plus:	Green Label Plus 1098
Pre-Consumer Recycled Content:	44%
NSF 140:	Gold
Declare Label:	Declared

**PERFORMANCE**

Static:	AATCC-134 Under 3.5 KV
Flammability:	ASTM E 648 Class 1 (Glue Down)
Smoke Density:	ASTM E 662 Less than 450

**SERVICE**

Warranties:	Lifetime Limited Carpet Tile Warranty, Lifetime Static
-------------	--



7131  
Madras



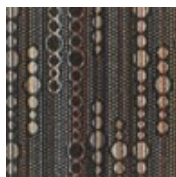
7878  
Mudslide



7968  
Smoky Martini



7585  
Sea Breeze



7989  
Black Velvet