



**DESIGN**

Product Type:	Tile
Construction:	Tufted
Minimum Sq. Yd.:	No Minimum
Surface Texture:	Level Heathered Loop
Gauge:	1/8 (31.50 rows per 10 cm)
Density:	6,429
Weight Density:	141,438
Stitches Per Inch:	8.9 (35.04 epr 10 cm)
Finished Pile Thickness:	.084" (2.13 mm)
Dye Method:	Solution Dyed
Backing Material:	EcoFlex ICT
Fiber Type:	Colorstrand® SD Nylon
Face Weight:	15.0 oz. per sq. yd. (509 g/m2)
Pattern Repeat:	Not Applicable
Size:	24" x 24" (.6096 m x .6096 m)
Installation Method:	QuarterTurn
Soil Release Technology:	Sentry Plus
GSA Stain Release Rating:	Pass
Foot Traffic Recommendation TARR:	Heavy

**SUSTAINABILITY**

IAQ Green Label Plus:	Green Label Plus 1098
Pre-Consumer Recycled Content:	48%
NSF 140:	Gold
Declare Label:	Declared

**PERFORMANCE**

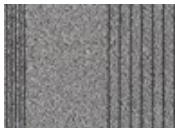
Static:	AATCC-134 Under 3.5 KV
Flammability:	ASTM E 648 Class 1 (Glue Down)
Smoke Density:	ASTM E 662 Less than 450

**SERVICE**

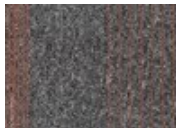
Warranties:	Lifetime Limited Carpet Tile Warranty, Lifetime Limited Colorfastness to Light, 10 Year Limited Colorfastness to Atmospheric Contaminants, 10 Year Limited Stain Warranty, Lifetime Static
-------------	--



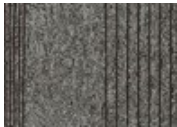
7559  
Knuckle Ball



7714  
Web Gem



7719  
Southpaw



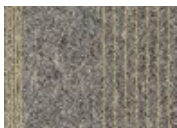
7818  
Diamond



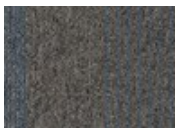
7837  
Cleanup



7866  
Bunt



7928  
Full Count



7978  
Heater