



DESIGN

Product Type:	Tile
Construction:	Tufted
Minimum Sq. Yd.:	No Minimum
Surface Texture:	Textured Patterned Loop
Gauge:	1/12 (47.00 rows per 10 cm)
Density:	5,094
Weight Density:	76,415
Stitches Per Inch:	9.8 (38.58 per 10 cm)
Finished Pile Thickness:	.106" (2.69 mm)
Dye Method:	Solution Dyed
Backing Material:	EcoFlex ICT
Fiber Type:	Colorstrand® SD Nylon
Face Weight:	15.0 oz. per sq. yd. (509 g/m2)
Pattern Repeat:	Not Applicable
Size:	24" x 24" (.6096 m x .6096 m)
Installation Method:	VerticalAshlar, QuarterTurn, MultiDirectional, Monolithic, BrickAshlar
Soil Release Technology:	Sentry Plus
GSA Stain Release Rating:	Pass
Foot Traffic Recommendation TARR:	Severe

SUSTAINABILITY

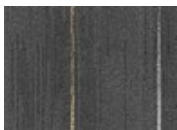
IAQ Green Label Plus:	Green Label Plus 1098
Pre-Consumer Recycled Content:	48.00
NSF 140:	Gold
Declare Label:	Declared

PERFORMANCE

Static:	AATCC-134 Under 3.5 KV
Flammability:	ASTM E 648 Class 1 (Glue Down)
Smoke Density:	ASTM E 662 Less than 450

SERVICE

Warranties:	Lifetime Limited Carpet Tile Warranty, Lifetime Limited Colorfastness to Light, 10 Year Limited Colorfastness to Atmospheric Contaminants, 10 Year Limited Stain Warranty, Lifetime Static
-------------	--



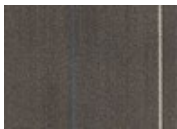
999
Leather Jacket



983
Roust About



955
Cool Hand



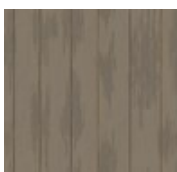
883
Wild Thing



862
Tough Guy



859
Glory Days



751
Dare Devil



358
Thrill Seeker



152
Living Fast