



**DESIGN**

Woven Pile Weight:	36.0 oz. per sq. yd. (1221 g/m <sup>2</sup> )
Product Type:	Woven
Construction:	Woven
Minimum Sq. Yd.:	No Minimum
Surface Texture:	Textured Patterned Cut and Loop
Density:	5,684
Weight Density:	204,624
Pitch:	216 (315 ends per meter)
Rows Per Inch:	10.0 (39.37 per 10 cm)
Finished Pile Thickness:	.228" (5.79 mm)
Dye Method:	Yarn Dyed
Backing Material:	Woven
Fiber Type:	Ultron® Nylon
Pattern Repeat:	1" (W) x 1" (L)
Width:	12' width (3.66 m)
Soil Release Technology:	Sentry Plus
Foot Traffic Recommendation TARR:	Heavy

**SUSTAINABILITY**

IAQ Green Label Plus:	CRI Green Label Plus GLP3802
NSF 140:	Woven - NSF 140 Gold
Declare Label:	Declared Red List Free

**PERFORMANCE**

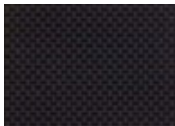
Static:	AATCC-134 Under 3.5 KV
Flammability:	ASTM E 648 Class 1 (Glue Down)
Smoke Density:	ASTM E 662 Less than 450

**SERVICE**

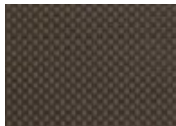
Warranties:	Lifetime Limited Woven Wear Warranty, Lifetime Static
-------------	---



117  
Saddle



555  
Night Sky



646  
Spruce



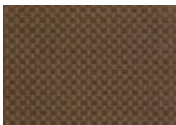
686  
Evergreen



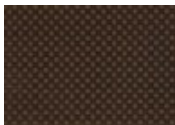
727  
Cross Country



772  
Rustic



828  
Lodge



858  
Wilderness



878  
Explore



959  
Campfire