



DESIGN

Product Type:	Broadloom
Construction:	Tufted
Minimum Sq. Yd.:	No Minimum
Surface Texture:	Textured Solid Cut & Loop
Gauge:	1/10 (39.37 rows per 10 cm)
Density:	7,125
Weight Density:	270,750
Stitches Per Inch:	16.3 (64.17 per 10 cm)
Finished Pile Thickness:	.192" (4.88 mm)
Dye Method:	Piece Dyed
Backing Material:	Unibond® Plus
Fiber Type:	Ultron® Nylon
Face Weight:	38.0 oz. per sq. yd. (1288 g/m2)
Pattern Repeat:	None
Width:	12' width (3.66 m)
Soil Release Technology:	Sentry
Foot Traffic Recommendation TARR:	Severe

SUSTAINABILITY

IAQ Green Label Plus:	Green Label Plus 3802
Pre-Consumer Recycled Content:	19%
NSF 140:	Gold
Declare Label:	Declared Red List Free

PERFORMANCE

Static:	AATCC-134 Under 3.5 KV
Flammability:	ASTM E 648 Class 1 (Glue Down)
Smoke Density:	ASTM E 662 Less than 450

SERVICE

Warranties:	Lifetime Limited Unibond® Plus Warranty, Lifetime Static
-------------	--



5474
Storm



5475
Cobblestone



5476
India Ink



5477
Mercury



5478
Taupe



5479
Carob



5481
Graphite



5482
Pumice



5483
Caramel



5485
Redwood



5486
Wheat



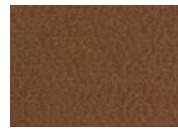
5487
Chamois



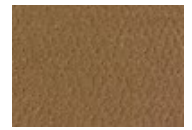
5488
Canyon



5489
Sand



5491
Pinto



5492
Flax



5494
Vineyard



5495
Navy



5497
Admiral



5499
Hydrangea



5500
Steel



5501
Lake



5502
Classic Teal



5504
Juniper



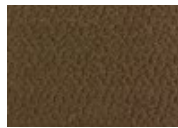
5506
Camouflage



5507
Dill



5508
Jade



5509
Hemlock



6061
Antique Blue



12623
Bittersweet



12624
Tokay



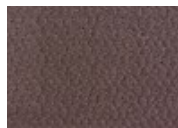
12625
Loden



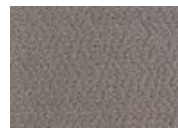
12629
Java



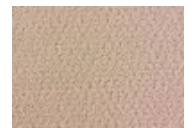
12630
Lichen



12631
Koala



12632
Fossil



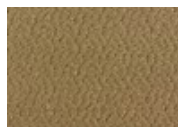
12634
Linen



12635
Cork



12638
Birch



12639
Julep



12645
Driftwood



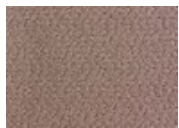
12653
Brandy



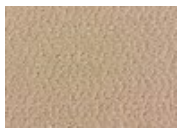
12654
Chambray



12677
Lilac Mist



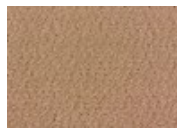
13938
Putty



13939
Nickel



13942
Sandalwood



13943
Ginger