

DESIGN

| | |
|-----------------------------------|----------------------------------|
| Product Type: | Woven |
| Construction: | Woven |
| Minimum Sq. Yd.: | No Minimum |
| Surface Texture: | Textured Patterned Loop |
| Density: | 9,000 |
| Weight Density: | 306,000 |
| Pitch: | 216 (315 ends per meter) |
| Rows Per Inch: | 9.5 (37.40 per 10 cm) |
| Finished Pile Thickness: | .136" (3.45 mm) |
| Dye Method: | Yarn Dyed |
| Backing Material: | Woven |
| Fiber Type: | Ultron® Nylon |
| Face Weight: | 34.0 oz. per sq. yd. (1153 g/m2) |
| Pattern Repeat: | 8" (W) x 2.75" (L) |
| Width: | 12' width (3.66 m) |
| Soil Release Technology: | Sentry Plus |
| Foot Traffic Recommendation TARR: | Severe |

SUSTAINABILITY

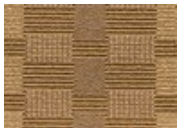
| | |
|-----------------------|------------------------|
| IAQ Green Label Plus: | Green Label Plus 3802 |
| NSF 140: | Gold |
| Declare Label: | Declared Red List Free |

PERFORMANCE

| | |
|----------------|--------------------------------|
| Static: | AATCC-134 Under 3.5 KV |
| Flammability: | ASTM E 648 Class 1 (Glue Down) |
| Smoke Density: | ASTM E 662 Less than 450 |

SERVICE

| | |
|-------------|---|
| Warranties: | Lifetime Limited Woven Wear Warranty, Lifetime Static |
|-------------|---|



249
Grand Central
Station



314
Union Square



549
Empire State



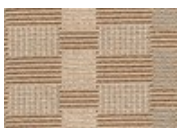
595
The Metropolitan



649
Greenwich Village



717
Chelsea



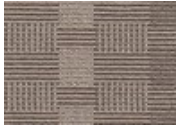
736
Broadway



878
Brooklyn Bridge



898
Radio City



989
Rockafeller