



**DESIGN**

Woven Pile Weight:	30.0 oz. per sq. yd. (1017 g/m <sup>2</sup> )
Product Type:	Woven
Construction:	Woven
Minimum Sq. Yd.:	No Minimum
Surface Texture:	Textured Patterned Loop
Density:	7,347
Weight Density:	220,410
Pitch:	216 (315 ends per meter)
Rows Per Inch:	9.0 (35.43 per 10 cm)
Finished Pile Thickness:	.147" (3.73 mm)
Dye Method:	Yarn Dyed
Backing Material:	Woven
Fiber Type:	Ultron® Nylon
Pattern Repeat:	.50" (W) x .25" (L)
Width:	12' width (3.66 m)
Soil Release Technology:	Sentry Plus
Foot Traffic Recommendation TARR:	Severe

**SUSTAINABILITY**

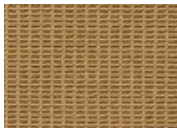
IAQ Green Label Plus:	CRI Green Label Plus GLP3802
NSF 140:	Woven - NSF 140 Gold
Declare Label:	Declared Red List Free

**PERFORMANCE**

Static:	AATCC-134 Under 3.5 KV
Flammability:	ASTM E 648 Class 1 (Glue Down)
Smoke Density:	ASTM E 662 Less than 450

**SERVICE**

Warranties:	Lifetime Limited Woven Wear Warranty, Lifetime Static
-------------	---



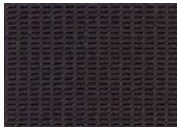
249  
Grand Central  
Station



314  
Union Square



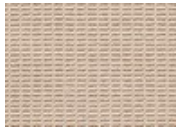
549  
Empire State



595  
The Metropolitan



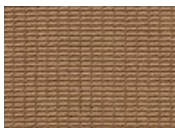
649  
Greenwich Village



717  
Chelsea



736  
Broadway



878  
Brooklyn Bridge



898  
Radio City



989  
Rockefeller