



**DESIGN**

Woven Pile Weight:	<b>21.0 oz. per sq. yd. (712 g/m2)</b>
Product Type:	<b>Woven</b>
Construction:	<b>Woven</b>
Minimum Sq. Yd.:	<b>No Minimum</b>
Surface Texture:	<b>Level Patterned Loop</b>
Density:	<b>7,132</b>
Weight Density:	<b>149,772</b>
Pitch:	<b>216 (315 ends per meter)</b>
Rows Per Inch:	<b>8.0 (31.50 per 10 cm)</b>
Finished Pile Thickness:	<b>.106" (2.69 mm)</b>
Dye Method:	<b>Solution Dyed</b>
Backing Material:	<b>Woven</b>
Fiber Type:	<b>Duracolor® Premium Nylon</b>
Fiber Technology:	<b>Duracolor® by Mohawk Group's Stain Resistant System. Passes GSA requirements for permanent stain resistant carpet.</b>
Pattern Repeat:	<b>12" (W) x 13" (L)</b>
Width:	<b>12' width (3.66 m)</b>
Soil Release Technology:	<b>Sentry Soil Protection</b>
GSA Stain Release Rating:	<b>Pass</b>
Foot Traffic Recommendation TARR:	<b>Severe</b>

**SUSTAINABILITY**

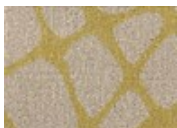
IAQ Green Label Plus:	<b>CRI Green Label Plus GLP3802</b>
NSF 140:	<b>Woven - NSF 140 Gold</b>
Declare Label:	<b>Declared Red List Free</b>

**PERFORMANCE**

Static:	<b>AATCC-134 Under 3.5 KV</b>
Flammability:	<b>ASTM E 648 Class 1 (Glue Down)</b>
Smoke Density:	<b>ASTM E 662 Less than 450</b>

**SERVICE**

Warranties:	<b>Lifetime Limited Woven Wear Warranty, Lifetime Duracolor Stain Warranty, Lifetime Static</b>
-------------	---



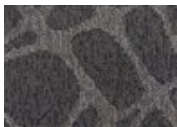
736  
Visual Design



757  
Form Relationship



878  
Streamlined Method



979  
Logical Theory