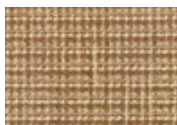


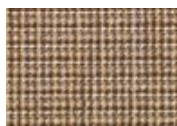
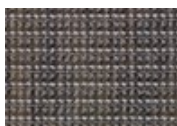

133  
Mohur

253  
Phoenix

398  
Haute

595  
Benthic

653  
Reidy

827  
Tannare

838  
Mirari

846  
Penuche

988  
Talio

## DESIGN

Product Type:	Woven
Construction:	Woven
Minimum Sq. Yd.:	No Minimum
Surface Texture:	Level Patterned Cut & Loop
Density:	9,366
Weight Density:	299,712
Pitch:	216 (315 ends per meter)
Rows Per Inch:	7.0 (27.56 per 10 cm)
Finished Pile Thickness:	.123" (3.12 mm)
Dye Method:	Solution Dyed / Yarn Dyed
Backing Material:	Woven
Fiber Type:	Colorstrand® Nylon
Face Weight:	32.0 oz. per sq. yd. (1085 g/m2)
Pattern Repeat:	.25" (W) x .50" (L)
Width:	12' (3.66 m)
Soil Release Technology:	Sentry
GSA Stain Release Rating:	Pass
Foot Traffic Recommendation TARR:	Severe

## SUSTAINABILITY

IAQ Green Label Plus:	Green Label Plus 3802
Pre-Consumer Recycled Content:	6%
NSF 140:	Gold
Declare Label:	Declared Red List Free

## PERFORMANCE

Static:	AATCC-134 Under 3.5 KV
Flammability:	ASTM E 648 Class 1 (Glue Down)
Smoke Density:	ASTM E 662 Less than 450

## SERVICE

Warranties:	Lifetime Static, Lifetime Limited Woven Wear Warranty
-------------	---



997  
Hibachi