



DESIGN

Product Type:	Tile
Construction:	Tufted
Minimum Sq. Yd.:	No Minimum
Surface Texture:	Textured Patterned Cut and Loop
Gauge:	1/12 (47.00 rows per 10 cm)
Density:	6,655
Weight Density:	146,410
Stitches Per Inch:	10.6 (41.73 per 10 cm)
Finished Pile Thickness:	.119" (3.02 mm)
Dye Method:	Solution Dyed / Yarn Dyed
Backing Material:	EcoFlex ICT
Fiber Type:	Antron® Legacy Nylon
Fiber Technology:	Duracolor® Stain Resistant System. Passes GSA requirements for permanent stain resistant carpet.
Face Weight:	22.0 oz. per sq. yd. (746 g/m2)
Pattern Repeat:	Not Applicable
Size:	24" x 24" (.6096 m x .6096 m)
Installation Method:	QuarterTurn, Monolithic, VerticalAshlar, BrickAshlar
Soil Release Technology:	DuraTech
GSA Stain Release Rating:	Pass
Foot Traffic Recommendation TARR:	Severe

SUSTAINABILITY

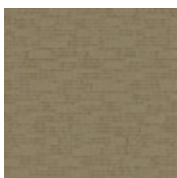
IAQ Green Label Plus:	Green Label Plus 1098
Pre-Consumer Recycled Content:	40%
NSF 140:	Gold

PERFORMANCE

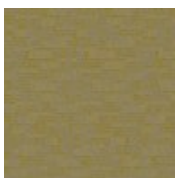
Static:	AATCC 134 Under 3.5 KV
Flammability:	ASTM E 648 Class I (Glue Down)
Smoke Density:	ASTM E 662 Less than 450

SERVICE

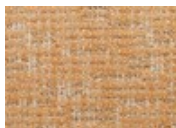
Warranties:	Lifetime Limited Carpet Tile Warranty, Lifetime Static, Lifetime Limited Tile Warranty
-------------	--



137
Appear



147
Come to Light



257
Into Sight



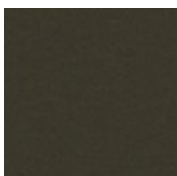
569
Flare Up



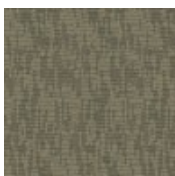
657
Make the Scene



665
Arrive



678
Spring



729
Expose



847
Stem



871
Transpire



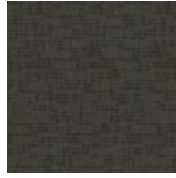
941
Arise



956
Present



957
Emerge



979
Reveal



989
Attend



998
Loom