



DESIGN

Product Type:	Tile
Construction:	Tufted
Minimum Sq. Yd.:	No Minimum
Surface Texture:	Level Patterned Cut & Loop
Gauge:	1/12 (47.00 rows per 10 cm)
Density:	6,545
Weight Density:	143,990
Stitches Per Inch:	11.0 (43.31 per 10 cm)
Finished Pile Thickness:	.121" (3.07 mm)
Dye Method:	Solution Dyed / Yarn Dyed
Backing Material:	EcoFlex ICT
Fiber Type:	Antron® Legacy Nylon
Fiber Technology:	Duracolor® Stain Resistant System. Passes GSA requirements for permanent stain resistant carpet.
Face Weight:	22.0 oz. per sq. yd. (746 g/m2)
Pattern Repeat:	Not Applicable
Size:	24" x 24" (.6096 m x .6096 m)
Installation Method:	QuarterTurn, Monolithic, VerticalAshlar, BrickAshlar
Soil Release Technology:	DuraTech
GSA Stain Release Rating:	Pass
Foot Traffic Recommendation TARR:	Severe

SUSTAINABILITY

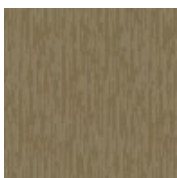
IAQ Green Label Plus:	Green Label Plus 1098
Pre-Consumer Recycled Content:	40%
NSF 140:	Gold

PERFORMANCE

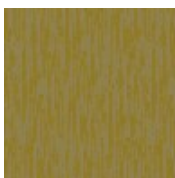
Static:	AATCC 134 Under 3.5 KV
Flammability:	ASTM E 648 Class I (Glue Down)
Smoke Density:	ASTM E 662 Less than 450

SERVICE

Warranties:	Lifetime Limited Carpet Tile Warranty, Lifetime Static, Lifetime Limited Tile Warranty
-------------	--



137
Appear



147
Come to Light



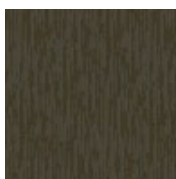
257
Into Sight



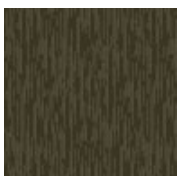
569
Flare Up



657
Make the Scene



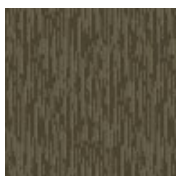
665
Arrive



678
Spring



729
Expose



847
Stem



871
Transpire



941
Arise



956
Present



957
Emerge



979
Reveal



989
Attend



998
Loom