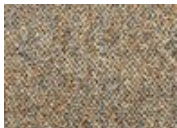




**DESIGN**

---

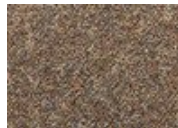
Product Type:	Tile
Construction:	Tufted
Minimum Sq. Yd.:	No Minimum
Surface Texture:	Level Multi Colored Loop
Gauge:	1/10 (39.37 rows per 10 cm)
Density:	6,117
Weight Density:	159,058
Stitches Per Inch:	11.5 per inch (45.28 per 10 cm)
Finished Pile Thickness:	.153" (3.89 mm)
Dye Method:	Solution Dyed / Yarn Dyed
Backing Material:	EcoFlex NXT
Fiber Type:	Duracolor® Premium Nylon
Fiber Technology:	Duracolor® by Mohawk Group's Stain Resistant System. Passes GSA requirements for permanent stain resistant carpet.
Face Weight:	26.0 oz per sq. yd. (882 g/m2)
Pattern Repeat:	Not Applicable
Size:	24" x 24" (.6096 m x .6096 m)
Installation Method:	Monolithic
Soil Release Technology:	Sentry Plus
GSA Stain Release Rating:	Pass
Foot Traffic Recommendation TARR:	Severe



214  
Sandy Shore



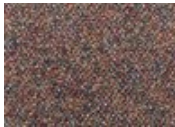
218  
Hammered Tin



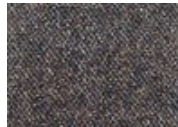
228  
Natural Hybrid



311  
Chameleon Foil



312  
Enriched Garnet



317  
Velvet Underground



322  
Sundried Tomato



324  
Grounded Earth



327  
Twilight Format

**SUSTAINABILITY**

---

IAQ Green Label Plus:	Green Label Plus 1171
Pre-Consumer Recycled Content:	54.00
Post-Consumer Recycled Content:	1.00
NSF 140:	Gold
Declare Label:	Declared Red List Free

**PERFORMANCE**

---

Static:	AATCC-134 Under 3.5 KV
Flammability:	ASTM E 648 Class 1 (Glue Down)
Smoke Density:	ASTM E 662 Less than 450

**SERVICE**

---

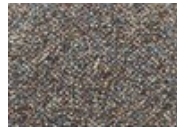
Warranties:	Lifetime Limited Carpet Tile Warranty, Lifetime Duracolor Stain Warranty, Lifetime Static
-------------	---



337  
Slatened Sky



418  
Burnished Iron



421  
Metal Works