



DESIGN

Product Type:	Tile
Construction:	Tufted
Minimum Sq. Yd.:	No Minimum
Surface Texture:	Patterned Loop
Gauge:	1/10 (39.37 rows per 10 cm)
Density:	6,338
Weight Density:	158,450
Stitches Per Inch:	12.0 (47.24 per 10 cm)
Finished Pile Thickness:	.142" (3.61 mm)
Dye Method:	Solution Dyed / Yarn Dyed
Backing Material:	EcoFlex NXT
Fiber Type:	Duracolor® Premium Nylon
Fiber Technology:	Duracolor® by Mohawk Group's Stain Resistant System. Passes GSA requirements for permanent stain resistant carpet.
Face Weight:	25.0 oz. per sq. yd. (848 g/m ²)
Pattern Repeat:	Not Applicable
Size:	24" x 24" (.6096 m x .6096 m)
Installation Method:	QuarterTurn, Monolithic, BrickAshlar, VerticalAshlar, MultiDirectional
Soil Release Technology:	Sentry Soil Protection
GSA Stain Release Rating:	Pass
Foot Traffic Recommendation TARR:	Severe

SUSTAINABILITY

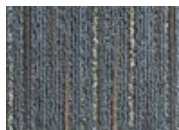
IAQ Green Label Plus:	Green Label Plus 1171
Pre-Consumer Recycled Content:	54.00
Post-Consumer Recycled Content:	1.00
NSF 140:	Gold
Declare Label:	Declared Red List Free

PERFORMANCE

Static:	AATCC-134 Under 3.5 KV
Flammability:	ASTM E 648 Class 1 (Glue Down)
Smoke Density:	ASTM E 662 Less than 450

SERVICE

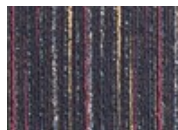
Warranties:	Lifetime Limited Carpet Tile Warranty, Lifetime Duracolor Stain Warranty, Lifetime Static
-------------	---



568
Tangled Teal



581
Navy Blend



584
Blue Concoction



668
Olive Medley



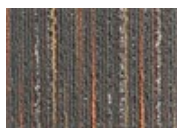
946
Combined Granite



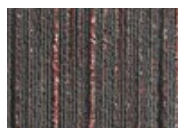
955
Infused Slate



969
Mingled Ash



971
Gray Interweave



983
Altered Charcoal