



**DESIGN**

Product Type:	Tile
Construction:	Tufted
Minimum Sq. Yd.:	BORDERS AND INSETS ONLY
Surface Texture:	Textured Solid Loop
Gauge:	1/10 (39.37 rows per 10 cm)
Density:	9,103
Weight Density:	200,275
Stitches Per Inch:	13.2 (51.97 per 10 cm)
Finished Pile Thickness:	.087" (2.21 mm)
Dye Method:	Solution Dyed
Backing Material:	EcoFlex NXT
Fiber Type:	Duracolor® Premium Nylon
Fiber Technology:	Duracolor® by Mohawk Group's Stain Resistant System. Passes GSA requirements for permanent stain resistant carpet.
Face Weight:	22.0 oz. per sq. yd. (746 g/m2)
Pattern Repeat:	Not Applicable
Size:	24" x 24" (.6096 m x .6096 m)
Installation Method:	QuarterTurn
Soil Release Technology:	Sentry Soil Protection
GSA Stain Release Rating:	Pass
Foot Traffic Recommendation TARR:	Severe

**SUSTAINABILITY**

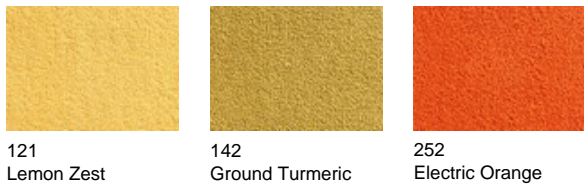
IAQ Green Label Plus:	Green Label Plus 1171
Pre-Consumer Recycled Content:	56%
Post-Consumer Recycled Content:	1%
NSF 140:	Gold
Declare Label:	Declared Red List Free

**PERFORMANCE**

Static:	AATCC-134 Under 3.5 KV
Flammability:	ASTM E 648 Class 1 (Glue Down)
Smoke Density:	ASTM E 662 Less than 450

**SERVICE**

Warranties:	Lifetime Limited Carpet Tile Warranty, Lifetime Duracolor Stain Warranty, Lifetime Static
-------------	---



121  
Lemon Zest

142  
Ground Turmeric

252  
Electric Orange



258  
Cajun Spice

352  
Sundried Tomato

353  
Tango



354  
Mulled Wine

374  
Scarlet

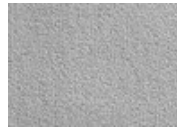
384  
Aubergine



453  
Kaleidoscope



483  
Passion Purple



529  
Sterling Gray



545  
Kingfisher



546  
Jazz



559  
Hazy



566  
Aquatic



575  
Indigo Batik



595  
National Blue



641  
Limeade



646  
Parakeet



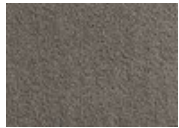
841  
Tarnished Brass



862  
Tree Bark



863  
Henna



866  
Portabello



883  
Espresso



889  
Peppercorn



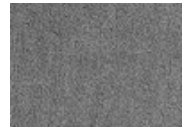
917  
Chalk Dust



933  
Lunar



964  
Graphite



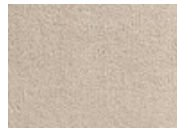
976  
Brushed Metal



996  
Black Bean



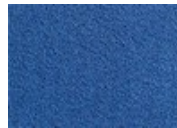
676  
Zucchini



758  
Malt



168  
Mustard Seed



555  
Moroccan Tile



655  
Calypso