



DESIGN

Product Type:	Tile
Construction:	Tufted
Minimum Sq. Yd.:	No Minimum
Surface Texture:	Textured Solid Loop
Gauge:	1/10 (39.37 rows per 10 cm)
Density:	9,103
Weight Density:	200,275
Stitches Per Inch:	13.2 (51.97 per 10 cm)
Finished Pile Thickness:	.087" (2.21 mm)
Dye Method:	Solution Dyed
Backing Material:	EcoFlex NXT
Fiber Type:	Duracolor® Premium Nylon
Fiber Technology:	Duracolor® Stain Resistant System. Passes GSA requirements for permanent stain resistant carpet.
Face Weight:	22.0 oz. per sq. yd. (746 g/m2)
Pattern Repeat:	Not Applicable
Size:	12" x 36" (.3048 m x .9144 m)
Installation Method:	QuarterTurn
Soil Release Technology:	Sentry Plus
GSA Stain Release Rating:	Pass
Foot Traffic Recommendation TARR:	Severe

SUSTAINABILITY

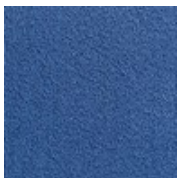
IAQ Green Label Plus:	Green Label Plus 1171
Pre-Consumer Recycled Content:	56%
Post-Consumer Recycled Content:	1%
NSF 140:	Gold
Declare Label:	Declared Red List Free

PERFORMANCE

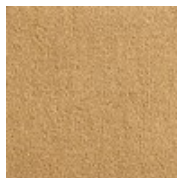
Static:	AATCC-134 Under 3.5 KV
Flammability:	ASTM E 648 Class 1 (Glue Down)
Smoke Density:	ASTM E 662 Less than 450

SERVICE

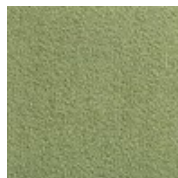
Warranties:	Lifetime Limited Carpet Tile Warranty, Lifetime Duracolor Stain Warranty, Lifetime Static
-------------	---



555 Moroccan Tile



168 Mustard Seed



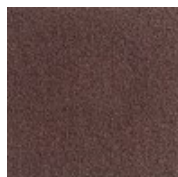
646 Parakeet



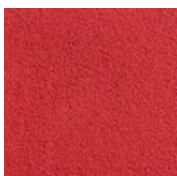
566 Aquatic



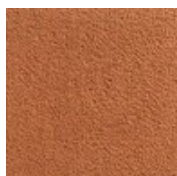
559 Hazy



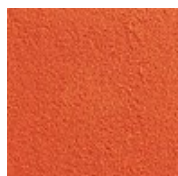
384 Aubergine



353 Tango



258 Cajun Spice



252 Electric Orange



142
Ground Turmeric



121
Lemon Zest



352
Sundried Tomato



354
Mulled Wine



374
Scarlet



453
Kaleidoscope



483
Passion Purple



529
Sterling Gray



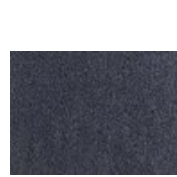
545
Kingfisher



546
Jazz



575
Indigo Batik



595
National Blue



641
Limeade



655
Calypso



676
Zucchini



758
Malt



841
Tarnished Brass



862
Tree Bark



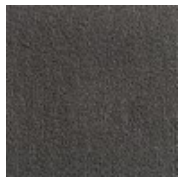
863
Henna



866
Portabello



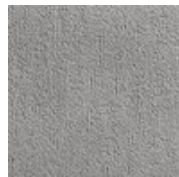
883
Espresso



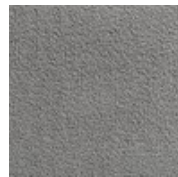
889
Peppercorn



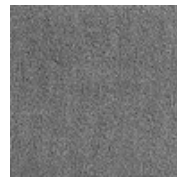
917
Chalk Dust



933
Lunar



964
Graphite



976
Brushed Metal



996
Black Bean