



**DESIGN**

Tufted Pile Weight:	<b>19.0 oz. per sq. yd. (644 g/m2)</b>
Product Type:	<b>Tile</b>
Construction:	<b>Tufted</b>
Minimum Sq. Yd.:	<b>No Minimum</b>
Surface Texture:	<b>Textured Patterned Loop</b>
Gauge:	<b>1/12 (47.00 rows per 10 cm)</b>
Density:	<b>8,550</b>
Weight Density:	<b>162,450</b>
Stitches Per Inch:	<b>10.8 (42.52 per 10 cm)</b>
Finished Pile Thickness:	<b>.080" (2.03 mm)</b>
Dye Method:	<b>Solution Dyed</b>
Backing Material:	<b>EcoFlex ICT</b>
Fiber Type:	<b>Antron® Lumena™ Nylon</b>
Pattern Repeat:	<b>Not Applicable</b>
Size:	<b>12" x 36" (.3048 m x .9144 m)</b>
Installation Method:	<b>Half Lap, Brick Ashlar, Basket Weave, Plank Half Lap, Random, Herringbone</b>
Soil Release Technology:	<b>DuraTech®</b>
Foot Traffic Recommendation TARR:	<b>Severe</b>

**SUSTAINABILITY**

IAQ Green Label Plus:	<b>CRI Green Label Plus GLP1098</b>
Pre-Consumer Recycled Content:	<b>41%</b>
NSF 140:	<b>EcoFlex ICT - NSF 140 Gold</b>
Declare Label:	<b>Declared Red List Free</b>

**PERFORMANCE**

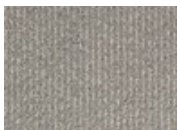
Static:	<b>AATCC-134 Under 3.5 KV</b>
Flammability:	<b>ASTM E 648 Class 1 (Glue Down)</b>
Smoke Density:	<b>ASTM E 662 Less than 450</b>

**SERVICE**

Warranties:	<b>Lifetime Limited Carpet Tile Warranty, Lifetime Static</b>
-------------	---



727  
Transform



739  
Convert



847  
Reshape



859  
Adjust



868  
Fixed



947  
Complex



969  
Reform



979  
Modify



988  
Adapt