



DESIGN

Product Type:	Modular-Custom
Construction:	Tufted
Minimum Sq. Yd.:	250 sq yd minimum
Surface Texture:	Textured Patterned Loop
Gauge:	1/12 (47.00 rows per 10 cm)
Density:	5,955
Weight Density:	131,010
Stitches Per Inch:	10.6 (41.73 per 10 cm)
Finished Pile Thickness:	.133" (3.38 mm)
Dye Method:	Solution Dyed / Yarn Dyed
Backing Material:	EcoFlex ICT
Fiber Type:	Antron® Legacy Nylon
Fiber Technology:	Duracolor® Stain Resistant System by Mohawk Group. Passes GSA requirements for permanent stain resistant carpet
Face Weight:	22.0 oz. per sq. yd. (746 g/m2)
Pattern Repeat:	Not Applicable
Size:	24" x 24" (.6096 m x .6096 m)
Installation Method:	QuarterTurn, BrickAshlar, Monolithic, VerticalAshlar
Soil Release Technology:	DuraTech®
GSA Stain Release Rating:	Pass
Foot Traffic Recommendation TARR:	Severe

SUSTAINABILITY

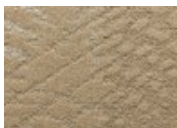
IAQ Green Label Plus:	Green Label Plus 1098
Pre-Consumer Recycled Content:	35%
NSF 140:	Gold
Declare Label:	Declared

PERFORMANCE

Static:	AATCC 134 Under 3.5 KV
Flammability:	ASTM E 648 Class I (Glue Down)
Smoke Density:	ASTM E 662 Less than 450

SERVICE

Warranties:	Lifetime Limited Carpet Tile Warranty, Lifetime Static
-------------	---



137
Appear



147
Come to Light



257
Into Sight



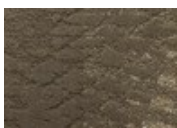
569
Flare Up



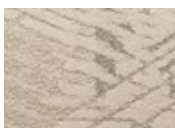
657
Make the Scene



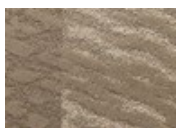
665
Arrive



678
Spring



729
Expose



847
Stem



871
Transpire



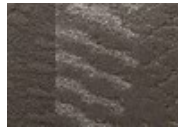
941
Arise



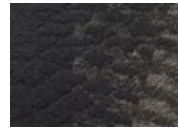
956
Present



957
Emerge



979
Reveal



989
Attend



998
Loom