



**DESIGN**

Product Type:	Modular-Custom
Construction:	Tufted
Minimum Sq. Yd.:	250 sq yd minimum
Surface Texture:	Textured Patterned Loop
Gauge:	1/12 (47.00 rows per 10 cm)
Density:	6,600
Weight Density:	145,200
Stitches Per Inch:	10.6 (41.73 per 10 cm)
Finished Pile Thickness:	.120" (3.05 mm)
Dye Method:	Solution Dyed / Yarn Dyed
Backing Material:	EcoFlex ICT
Fiber Type:	Antron® Legacy Nylon
Fiber Technology:	Duracolor® Stain Resistant System by Mohawk Group. Passes GSA requirements for permanent stain resistant carpet
Face Weight:	22.0 oz. per sq. yd. (746 g/m <sup>2</sup> )
Pattern Repeat:	Not Applicable
Size:	24" x 24" (.6096 m x .6096 m)
Installation Method:	BrickAshlar, QuarterTurn
Soil Release Technology:	DuraTech®
GSA Stain Release Rating:	Pass
Foot Traffic Recommendation TARR:	Severe

**SUSTAINABILITY**

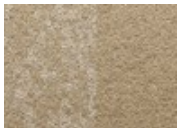
IAQ Green Label Plus:	Green Label Plus 1098
Pre-Consumer Recycled Content:	39%
Post-Consumer Recycled Content:	1%
NSF 140:	Gold
Declare Label:	Declared

**PERFORMANCE**

Static:	AATCC 134 Under 3.5 KV
Flammability:	ASTM E 648 Class I (Glue Down)
Smoke Density:	ASTM E 662 Less than 450

**SERVICE**

Warranties:	Lifetime Limited Carpet Tile Warranty, Lifetime Static
-------------	--



137  
Appear



147  
Come to Light



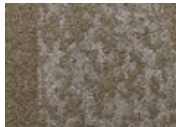
257  
Into Sight



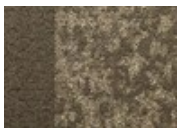
569  
Flare Up



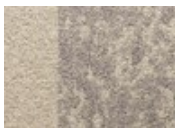
657  
Make the Scene



665  
Arrive



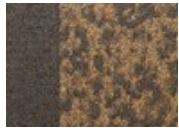
678  
Spring



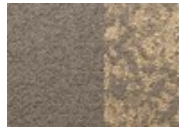
729  
Expose



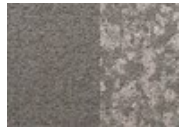
847  
Stem



871  
Transpire



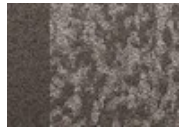
941  
Arise



956  
Present



957  
Emerge



979  
Reveal



989  
Attend



998  
Loom