



**DESIGN**

Product Type:	<b>Modular-Custom</b>
Construction:	<b>Tufted</b>
Minimum Sq. Yd.:	<b>250 sq yd minimum</b>
Surface Texture:	<b>Textured Patterned Cut and Loop</b>
Gauge:	<b>1/12 (47.00 rows per 10 cm)</b>
Density:	<b>6,188</b>
Weight Density:	<b>136,136</b>
Stitches Per Inch:	<b>11.0 (43.31 per 10 cm)</b>
Finished Pile Thickness:	<b>.128" (3.25 mm)</b>
Dye Method:	<b>Solution Dyed / Yarn Dyed</b>
Backing Material:	<b>EcoFlex ICT</b>
Fiber Type:	<b>Antron® Legacy Nylon</b>
Fiber Technology:	<b>Duracolor® Stain Resistant System by Mohawk Group. Passes GSA requirements for permanent stain resistant carpet</b>
Face Weight:	<b>22.0 oz. per sq. yd. (746 g/m2)</b>
Pattern Repeat:	<b>Not Applicable</b>
Size:	<b>24" x 24" (.6096 m x .6096 m)</b>
Installation Method:	<b>BrickAshlar, QuarterTurn</b>
Soil Release Technology:	<b>DuraTech®</b>
GSA Stain Release Rating:	<b>Pass</b>
Foot Traffic Recommendation TARR:	<b>Severe</b>

**SUSTAINABILITY**

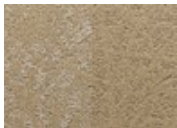
IAQ Green Label Plus:	<b>Green Label Plus 1098</b>
Pre-Consumer Recycled Content:	<b>35%</b>
NSF 140:	<b>Gold</b>
Declare Label:	<b>Declared</b>

**PERFORMANCE**

Static:	<b>AATCC 134 Under 3.5 KV</b>
Flammability:	<b>ASTM E 648 Class I (Glue Down)</b>
Smoke Density:	<b>ASTM E 662 Less than 450</b>

**SERVICE**

Warranties:	<b>Lifetime Limited Carpet Tile Warranty, Lifetime Static</b>
-------------	---



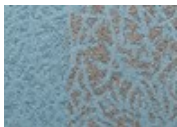
137  
Appear



147  
Come to Light



257  
Into Sight



569  
Flare Up



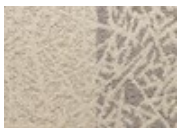
657  
Make the Scene



665  
Arrive



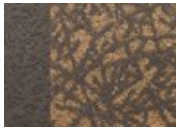
678  
Spring



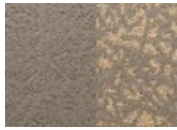
729  
Expose



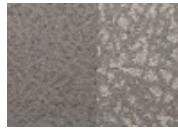
847  
Stem



871  
Transpire



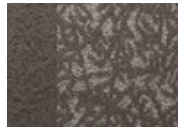
941  
Arise



956  
Present



957  
Emerge



979  
Reveal



989  
Attend



998  
Loom