



DESIGN

Product Type:	Modular-Custom
Construction:	Tufted
Minimum Sq. Yd.:	250 sq yd minimum
Surface Texture:	Textured Patterned Cut and Loop
Gauge:	1/12 (47.00 rows per 10 cm)
Density:	6,188
Weight Density:	136,136
Stitches Per Inch:	11.5 (45.28 epr 10 cm)
Finished Pile Thickness:	.128" (3.25 mm)
Dye Method:	Solution Dyed / Yarn Dyed
Backing Material:	EcoFlex ICT
Fiber Type:	Antron® Legacy Nylon
Fiber Technology:	Duracolor® Stain Resistant System by Mohawk Group. Passes GSA requirements for permanent stain resistant carpet
Face Weight:	22.0 oz. per sq. yd. (746 g/m2)
Pattern Repeat:	Not Applicable
Size:	24" x 24" (.6096 m x .6096 m)
Installation Method:	QuarterTurn, BrickAshlar, Monolithic, VerticalAshlar
Soil Release Technology:	DuraTech®
GSA Stain Release Rating:	Pass
Foot Traffic Recommendation TARR:	Severe

SUSTAINABILITY

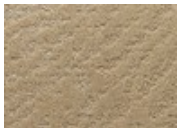
IAQ Green Label Plus:	Green Label Plus 1098
Pre-Consumer Recycled Content:	35%
NSF 140:	Gold
Declare Label:	Declared

PERFORMANCE

Static:	AATCC 134 Under 3.5 KV
Flammability:	ASTM E 648 Class I (Glue Down)
Smoke Density:	ASTM E 662 Less than 450

SERVICE

Warranties:	Lifetime Limited Carpet Tile Warranty, Lifetime Static
-------------	--



137
Appear



147
Come to Light



257
Into Sight



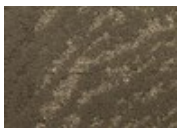
569
Flare Up



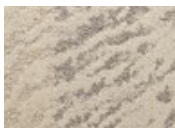
657
Make the Scene



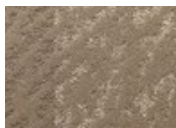
665
Arrive



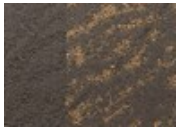
678
Spring



729
Expose



847
Stem



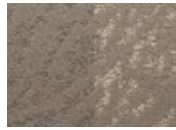
871
Transpire



941
Arise



956
Present



957
Emerge



979
Reveal



989
Attend



998
Loom