



**DESIGN**

Product Type:	Modular-Walk Off
Construction:	Tufted
Minimum Sq. Yd.:	No Minimum
Surface Texture:	Performance Tip Shear
Gauge:	5/32 (25.2 rows per 10 cm)
Density:	9,500
Weight Density:	361,000
Stitches Per Inch:	8.5 (33.46 per 10 cm)
Finished Pile Thickness:	.144" (3.66 mm)
Dye Method:	Solution Dyed
Backing Material:	EcoFlex ICT
Fiber Type:	Duracolor® Premium Nylon
Face Weight:	38.0 oz. per sq. yd. (1288 g/m2)
Pattern Repeat:	Not Applicable
Size:	24" x 24" (.6096 m x .6096 m)
Installation Method:	QuarterTurn, Monolithic, BrickAshlar, VerticalAshlar, MultiDirectional
Soil Release Technology:	Sentry Soil Protection
GSA Stain Release Rating:	Pass
Foot Traffic Recommendation TARR:	Severe

**SUSTAINABILITY**

IAQ Green Label Plus:	Green Label Plus 1098
Pre-Consumer Recycled Content:	44%
Post-Consumer Recycled Content:	1%
NSF 140:	Gold
Declare Label:	Declared

**PERFORMANCE**

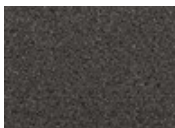
Static:	AATCC-134 Under 3.5 KV
Flammability:	ASTM E 648 Class 1 (Glue Down)
Smoke Density:	ASTM E 662 Less than 450

**SERVICE**

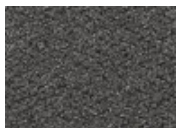
Warranties:	Lifetime Limited Carpet Tile Warranty, Lifetime Duracolor Stain Warranty, Lifetime Static
-------------	---



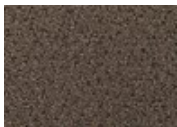
989  
Obsidian



983  
Iron Ore



955  
Cobalt



859  
Walnut