



DESIGN

Product Type:	Broadloom
Construction:	Tufted
Minimum Sq. Yd.:	No Minimum
Surface Texture:	Precision Cut and Loop
Gauge:	1/8 (31.50 rows per 10 cm)
Density:	2,663
Weight Density:	67,377
Stitches Per Inch:	11.6 (45.67 per 10 cm)
Finished Pile Thickness:	.342" (8.68 mm)
Dye Method:	Piece Dyed
Backing Material:	Weldlok®
Fiber Type:	100% Mohawk EverStrand BCF P.E.T.
Face Weight:	25.3 oz. per sq. yd.
Pattern Repeat:	1.5" (W) x 1.25" (L)
Width:	12' width (3.66 m)
Soil Release Technology:	Sentry Plus
Foot Traffic Recommendation TARR:	Moderate

SUSTAINABILITY

IAQ Green Label Plus:	Green Label Plus 7678
Post-Consumer Recycled Content:	41.00
NSF 140:	Gold

PERFORMANCE

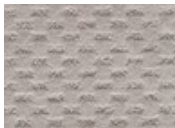
Static:	AATCC-134 Under 3.5 KV
Flammability:	ASTM E 648 Class 1 (Glue Down)
Smoke Density:	ASTM E 662 Less than 450

SERVICE

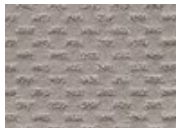
Warranties:	Lifetime Limited Wear Warranty, Lifetime Static
-------------	--



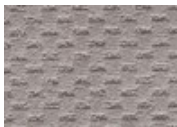
676
Rooftop Garden



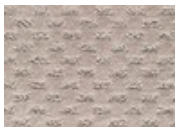
711
Almost Winter



712
Champagne



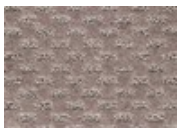
718
Hazy Taupe



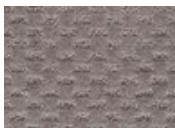
732
Heirloom



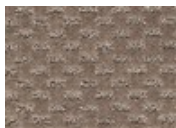
758
Mushroom



852
Nutmeg



859
Smoke Truffle



872
Riding Boots



878
Chateau



879
Tweed Coat



888
Café Latte



898
Espresso Bean



919
Penthouse



959
Museum Piece



979
Artic Seal