



DESIGN

Product Type:	Broadloom
Construction:	Tufted
Minimum Sq. Yd.:	No Minimum
Surface Texture:	Cut Pile
Gauge:	1/8 (31.50 rows per 10 cm)
Density:	2,243
Weight Density:	55,756
Stitches Per Inch:	10.3 (39.37 per 10 cm)
Finished Pile Thickness:	.437" (11.09 mm)
Dye Method:	Piece Dyed
Backing Material:	Weldlok®
Fiber Type:	100% Mohawk EverStrand BCF P.E.T.
Face Weight:	25.3 oz. per sq. yd.
Pattern Repeat:	1.5" (W) x 1.5" (L)
Width:	12' width (3.66 m)
Soil Release Technology:	Sentry Plus
Foot Traffic Recommendation TARR:	Heavy

SUSTAINABILITY

IAQ Green Label Plus:	Green Label Plus 7678
Post-Consumer Recycled Content:	41.00
NSF 140:	Gold

PERFORMANCE

Static:	AATCC-134 Under 3.5 KV
Flammability:	ASTM E 648 Class 1 (Glue Down)
Smoke Density:	ASTM E 662 Less than 450

SERVICE

Warranties:	Lifetime Limited Wear Warranty, Lifetime Static
-------------	--



676
Rooftop Garden



711
Almost Winter



712
Champagne



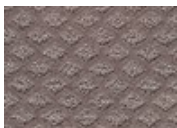
718
Hazy Taupe



732
Heirloom



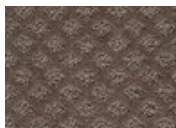
758
Mushroom



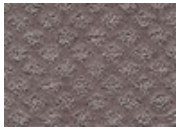
852
Nutmeg



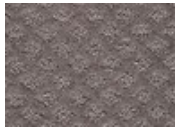
859
Smoke Truffle



872
Riding Boots



878
Chateau



879
Tweed Coat



888
Café Latte



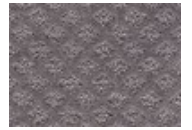
898
Espresso Bean



919
Penthouse



959
Museum Piece



979
Artic Seal