



DESIGN

Product Type:	Broadloom
Construction:	Tufted
Minimum Sq. Yd.:	No Minimum
Surface Texture:	Cut Pile
Gauge:	1/8 (31.50 rows per 10 cm)
Density:	2,837
Weight Density:	90,784
Stitches Per Inch:	11.6 (45.67 (per 10 cm)
Finished Pile Thickness:	.406" (10.31 mm)
Dye Method:	Piece Dyed
Backing Material:	Weldlok®
Fiber Type:	100% SmartStrand® Ultra™ BCF Triexta
Face Weight:	32.0 oz. per sq. yd. (1085 g/m2)
Pattern Repeat:	1.50" (W) x 1.25" (L)
Width:	12' width (3.66 m)
Soil Release Technology:	Sentry Plus
Foot Traffic Recommendation TARR:	Heavy

SUSTAINABILITY

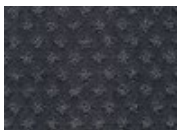
IAQ Green Label Plus:	Green Label Plus 1118
NSF 140:	Gold

PERFORMANCE

Static:	AATCC-134 Under 3.5 KV
Flammability:	ASTM E 648 Class 1 (Glue Down)
Smoke Density:	ASTM E 662 Less than 450

SERVICE

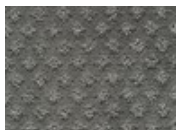
Warranties:	Lifetime Limited Wear Warranty, Lifetime Static
-------------	--



585
Nautica



636
Pistachio



676
Cypress



717
Seashell



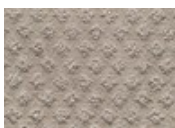
725
Shadow Pearl



729
Ivory Tusk



735
Smokey Taupe



736
Light Wheat



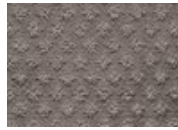
747
Camel



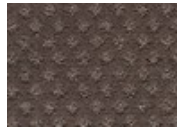
825
Brownstone



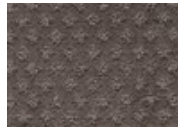
828
Granola



834
Allspice



883
Cattail



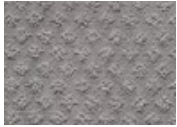
884
Pinecone



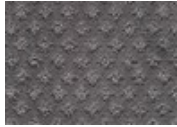
919
Icy



925
Moonrock



949
Skyline Steel



975
Slate



989
Ironstone



493
Cabernet