



DESIGN

Product Type:	Floating LVT
Gauge:	.16" (4 mm)
Wear Layer:	20 mil
Finish:	M-Force Enhanced Urethane
Edge Profile:	Microbevel
Size:	12'x24" (nominal)
Surface Profile:	Light Emboss
Anti-Microbial:	Yes
Installation:	Floating with Uniclic Locking System
Recommended Adhesive:	None Required
Square Feet Per Carton:	23.06 sf/ctn
Pieces Per Carton:	12 pcs/ctn
Pounds per carton:	29.09 lbs/ctn (13.19 kg/ctn)
Underlayment:	Mohawk ActiveSound
Underlayment Adhesive:	Mohawk M950, M700 or Mohawk's MS160 spray adhesive

PERFORMANCE

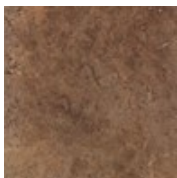
Construction:	Commercial Grade Floating Resilient Tile
Classification:	ASTM F1700 - Class III, Type A - Smooth, Type B - Embossed
Smoke Density:	ASTM E662 - Passes - < 450 (non-flaming)
Squareness:	ASTM F2055 - Passes - 0.010 in. max
Size and Tolerance:	ASTM F2055 - Passes - ±0.016 in. per linear foot
Dimensional Stability:	ASTM F2199 - Passes - 0.15% max (0.020 in. per linear foot)
Thickness:	ASTM F386 - Passes - 0.157±0.005 in. (4.0±0.13mm)
Flexibility:	ASTM F137 - Passes - ≤ 1.0 in., no cracks or breaks
Static Load:	ASTM F970 - Passes, modified - 1000 psi
Residual Indentation:	ASTM F1914 - Passes - Average less than 8%
Slip Resistance:	ASTM D2047 - Passes - > 0.6 Wet, 0.6 Dry
Resistance To Chemicals:	ASTM F925 - Passes - No Change or Slight Change
Resistance To Heat:	ASTM F1514 - Passes - ΔE ≤ 5
Resistance To Light:	ASTM F1515 - Passes - ΔE ≤ 5
Critical Radiant Flux:	ASTM E648 - Passes - Minimum 0.7 Watt

SUSTAINABILITY

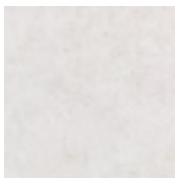
Rapidly Renewable Resource Content:	0%
Certification:	FloorScore® Certificate

SERVICE

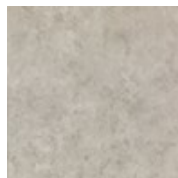
Warranties:	Limited 10 Year Commercial
-------------	----------------------------



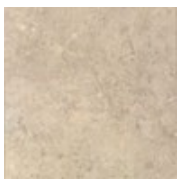
368
Ground Cover



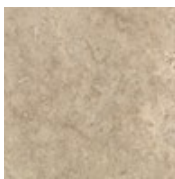
719
Haze



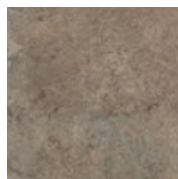
839
Steam



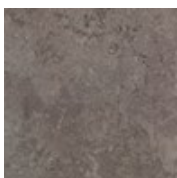
821
Paved Pass



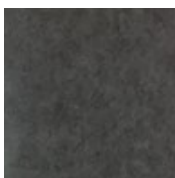
841
Mezzanine



866
Underground



973
Asphalt



997
Blackout