

Global Entry Collection



DESIGN

Product Type:	Glue Down LVT
Gauge:	.10" (2.5mm)
Wear Layer:	20 mil (0.5mm)
Finish:	M-Force Enhanced Urethane
Edge Profile:	Microbevel
Size:	7" x 48" (177.8 mm x 1219.2 mm)
Surface Profile:	Wood Emboss
Anti-Microbial:	No
Installation:	Glue Down
Recommended Adhesive:	M95.0 Resilient Flooring Adhesive, MS160 Spray, M700 Pressure Sensitive Adhesive
Square Feet Per Carton:	37.33 sf/ctn (3.34 m ² /ctn)
Pieces Per Carton:	16 pcs/ctn
Pounds per carton:	35.22 lbs/ctn (15.98 kg/ctn)
Underlayment:	Mohawk Accusound

PERFORMANCE

Construction:	Commercial Grade Resilient Tile
Classification:	ASTM F1700 - Class III, Type A - Smooth, Type B - Embossed
Smoke Density:	ASTM E662 - Passes
Squareness:	ASTM F2055 - Passes - 0.010 in. max
Size and Tolerance:	ASTM F2055 - Passes - ±0.016 in. per linear foot
Dimensional Stability:	ASTM F2199 - Passes - ≤ 0.024 in. per linear foot
Thickness:	ASTM F386 - Passes - Nominal ±0.005 in
Static Load:	ASTM F970 - Passes, modified - 1500 psi
Residual Indentation:	ASTM F1914 - Passes - Average less than 8%
Slip Resistance:	ASTM D2047 - Passes - > 0.6 Wet, 0.6 Dry
Resistance To Chemicals:	ASTM F925 - Passes - No Change or Slight Change
Resistance To Heat:	ASTM F1515 - Passes - ΔE ≤ 8
Resistance To Light:	ASTM F1515 - Passes - ΔE ≤ 8
Critical Radiant Flux:	ASTM E648 - Passes - ≥ 0.45 watts/cm ² , Class 1

SUSTAINABILITY

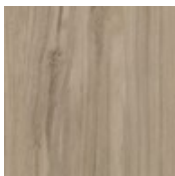
Certification:	FloorScore® certified
----------------	-----------------------

SERVICE

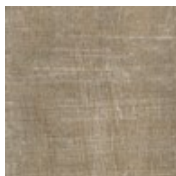
Warranties:	Limited 10 Year Commercial
-------------	----------------------------



811
Kabuki



828
Parchment



837
Haiku



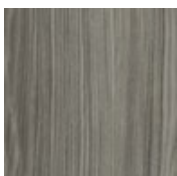
911
Ukiyo



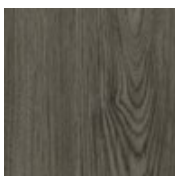
321
Charred Ash



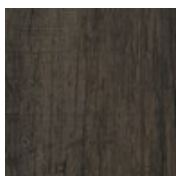
959
Nikko



933
Katana



963
Smoke

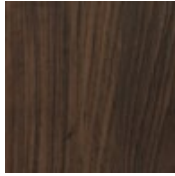


883
Otter

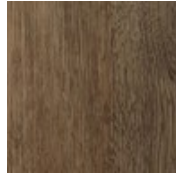
Global Entry Collection



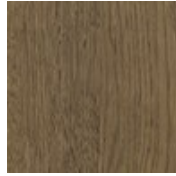
352
Siracha



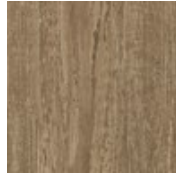
873
Tambur



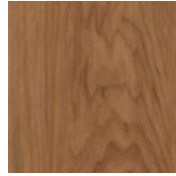
862
Tableau



853
Akashi Chestnut



241
Origami



231
Teak



122
Kuri Chestnut



222
Japanese Maple



138
Unaltered