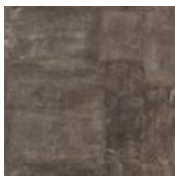
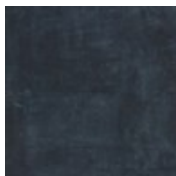




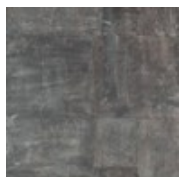
132  
Mantra



368  
Chakra



585  
Chi



945  
Meditation

**DESIGN**

|                         |   |
|-------------------------|---|
| Product Type:           | Glue Down LVT   |
| Gauge:                  | .10" (2.5 mm)   |
| Wear Layer:             | 20 mil  |
| Finish:                 | M-Force Enhanced Urethane                                   |
| Edge Profile:           | Microbevel  |
| Size:                   | 18" x 36" (457.2 mm x 914.4 mm)                             |
| Surface Profile:        | Light Emboss  |
| Anti-Microbial:         | No  |
| Installation:           | Glue Down   |
| Recommended Adhesive:   | M950 Acrylic, MS160 Spray, M700 Pressure Sensitive Adhesive |
| Square Feet Per Carton: | 40.5 sf/ctn (3.76 m <sup>2</sup> /ctn)                      |
| Pieces Per Carton:      | 9 pcs/ctn   |
| Pounds per carton:      | 38.18 lbs/ctn (17.31 kg/ctn)                                |
| Underlayment:           | Mohawk Accusound  |
| Underlayment Adhesive:  | Mohawk M950, M700 or Mohawk's MS160 spray adhesive          |

**PERFORMANCE**

|                          |  |
|--------------------------|--|
| Construction:            | Commercial Grade Resilient Tile                              |
| Classification:          | ASTM F1700 - Class III, Type A - Smooth, Type B - Embossed   |
| Smoke Density:           | ASTM E662 - Passes   |
| Squareness:              | ASTM F2055 - Passes - 0.010 in. max                          |
| Size and Tolerance:      | ASTM F2055 - Passes - ±0.016 in. per linear foot             |
| Dimensional Stability:   | ASTM F2199 - Passes - ≤ 0.024 in. per linear foot            |
| Thickness:               | ASTM F386 - Passes - Nominal ±0.005 in.                      |
| Static Load:             | ASTM F970 - Passes, modified - 1500 psi                      |
| Residual Indentation:    | ASTM F1914 - Passes - Average less than 8%                   |
| Slip Resistance:         | ASTM D2047 - Passes - > 0.6 Wet, 0.6 Dry                     |
| Resistance To Chemicals: | ASTM F925 - Passes - No Change or Slight Change              |
| Resistance To Heat:      | ASTM F1514 - Passes - ΔE ≤ 19                                |
| Resistance To Light:     | ASTM F1515 - Passes - ΔE ≤ 19                                |
| Critical Radiant Flux:   | ASTM E648 - Passes - ≥ 0.45 watts/cm <sup>2</sup> , Class 12 |

**SUSTAINABILITY**

|                                     |                         |
|-------------------------------------|-------------------------|
| Biobased Material Content:          | 0%                      |
| Rapidly Renewable Resource Content: | 0%                      |
| Certification:                      | FloorScore® Certificate |

**SERVICE**

|             |                            |
|-------------|----------------------------|
| Warranties: | Limited 10 Year Commercial |
|-------------|----------------------------|