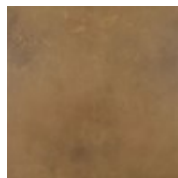


122  
Gypsum



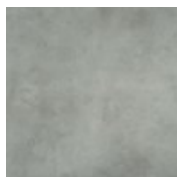
172  
Sulfur



268  
Sandstone



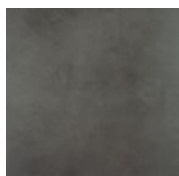
636  
Calcite



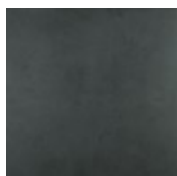
925  
Pebble



832  
River Rock



888  
Schist



999  
Onyx

**DESIGN**

Product Type:	Floating LVT
Gauge:	.20" (5mm)
Wear Layer:	21 mil
Finish:	M-Force Enhanced Urethane
Edge Profile:	Square
Size:	36" x 36"
Surface Profile:	Light Emboss
Anti-Microbial:	Yes
Installation:	Loose Lay with Perimeter Glue
Recommended Adhesive:	Perimeter Glue only with MS160 Spray. May also use M950 Acrylic
Square Feet Per Carton:	36 sf/ctn (3.34 m <sup>2</sup> /ctn)
Pieces Per Carton:	4 pcs/ctn
Pounds per carton:	63.48 lbs/ctn (28.79 kg/ctn)
Underlayment:	Mohawk Accusound
Underlayment Adhesive:	Mohawk M950, M700 or Mohawk's MS160 spray adhesive

**PERFORMANCE**

Construction:	Commercial Grade Floating Resilient Tile
Classification:	ASTM F1700 - Class III, Type A - Smooth, Type B - Embossed
Squareness:	ASTM F2055 - Passes - 0.010 in. max
Size and Tolerance:	ASTM F2055 - Passes - ±0.016 in. per linear foot
Dimensional Stability:	ASTM F2199 - Passes - ≤ 0.024 in. per linear foot
Thickness:	ASTM F386 - Passes - Nominal ±0.005 in.
Flexibility:	ASTM F137 - Passes - ≤ 1.0 in., no cracks or breaks
Static Load:	ASTM F970 - Passes, modified - 1000 psi
Residual Indentation:	ASTM F1914 - Passes - Average less than 8%
Slip Resistance:	ASTM D2047 - Passes - > 0.6 Wet, 0.6 Dry
Resistance To Chemicals:	ASTM F925 - Passes - No Change or Slight Change
Resistance To Heat:	ASTM F1514 - Passes - ΔE ≤ 8
Resistance To Light:	ASTM F1515 - Passes - ΔE ≤ 8
Critical Radiant Flux:	ASTM E648 - Passes - ≥ 0.45 watts/cm <sup>2</sup> , Class 1

**SUSTAINABILITY**

Rapidly Renewable Resource Content:	1%
Certification:	FloorScore® Certificate

**SERVICE**

Warranties:	Limited 10 Year Commercial
-------------	----------------------------