

Master Step Sheet Collection



**DESIGN**

Product Type:	Rubber
Gauge:	2mm(0.080")
Size:	5'W x 50'L (1.5mm x 15.2mm)
Installation Method:	Glue Down
Recommended Adhesive:	Mohawk Ad-777 Adhesive - Regular Traffic, Mohawk AD-535 Epoxy - Heavy Rolling Loads

**PERFORMANCE**

Construction:	Homogeneous
Classification:	ASTM F 1344 - Rubber Tile, Class 1, A or B
Hardness:	ASTM D 2240 - Shore A ≥ 85
Static Load:	ASTM F 970 (modified at 1,100 psi) - ≤0.005"
Abrasion Resistance:	ASTM D 3389 - Passes (H 18, 500g @ 1000 cycles)
Resistance To Chemicals:	ASTM F 925 - Exceeds
Resistance To Light:	ASTM F 1515 - ΔE ≤8.0
Resistance To Heat:	ASTM F 1514 - ΔE ≤8.0
Critical Radiant Flux:	ASTM E 648 - > 0.45
Smoke Density:	ASTM E 662 - ≤ 450

**SUSTAINABILITY**

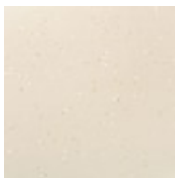
Certification:	FloorScore® certified
Pre Consumer RC:	1%

**SERVICE**

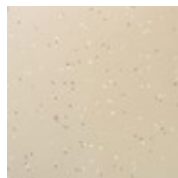
Warranties:	Limited 10 Year Commercial
-------------	----------------------------



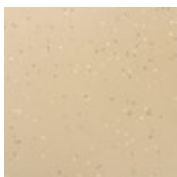
503  
Northern Light



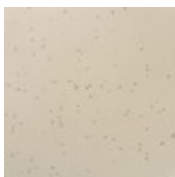
504  
Tawny Pearl



505  
Orient Espresso



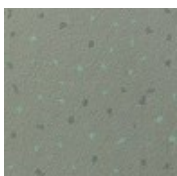
506  
Antique Paradise



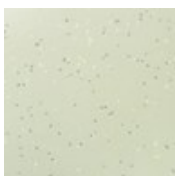
508  
Taupe Tease



509  
Shady Twilight



511  
Palm Paradise



512  
Silky Sage

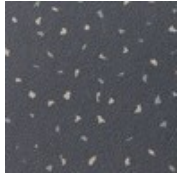


514  
Desert Daystar

Master Step Sheet Collection



515  
Soft Sun



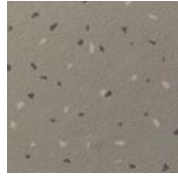
523  
Shadow Dune



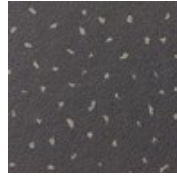
531  
Pewter Fossil



532  
Smoky Branch



534  
Castle Marne



537  
Warm Sable



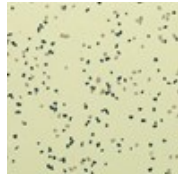
544  
Burnished Cinnamon



545  
Moroccan Crackle



550  
Gobi Lilac



575  
Oasis Flower