

Master Step Tile Collection



DESIGN

Product Type:	Rubber
Gauge:	3.17mm (1/8")
Size:	35 11/16" x 35 11/16" (905mm x 905mm), 13 1/16" x 17 13/16" (452mm x 452mm)
Square Feet Per Carton:	17 16/16" x 17 13/16" = 44 sq. ft / ctn 35 11/16" = 8.84 sq. ft / ctn
Pieces Per Carton:	17 16/16" x 17 13/16" = 20 pc / ctn 35 11/16" = 1 pc / ctn
Trim and Moldings:	Matching stair treads and cove base available
Installation Method:	Glue Down
Recommended Adhesive:	Mohawk Ad-777 Adhesive - Regular Traffic, Mohawk AD-535 Epoxy - Heavy Rolling Loads Under Patient Beds

PERFORMANCE

Construction:	Homogeneous Rubber Tile
Classification:	ASTM F 1344 - Rubber Tile, Class 1, A or B
Static Load:	ASTM F 970 (modified at 1,100 psi) - $\leq 0.005"$
Resistance To Chemicals:	ASTM F 925 - Complies (details upon request)
Resistance To Light:	ASTM F 1515 - $\Delta E \leq 8.0$
Resistance To Heat:	ASTM F 1514 - $\Delta E \leq 8.0$
Critical Radiant Flux:	ASTM E 648 - > 0.45
Smoke Density:	ASTM E 662 - ≤ 450
Coefficient of Friction:	ASTM D 2047 - ≥ 0.8

SUSTAINABILITY

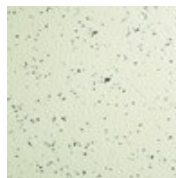
Certification:	FloorScore® certified SCS-FS-02926
Pre Consumer RC:	2%



103
Silver Circle



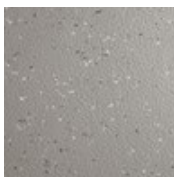
111
Emerald Isle



117
Whimsical White



130
Maltese Gray



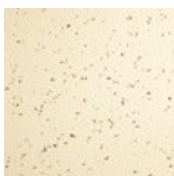
133
Polished Pewter



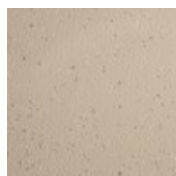
134
Platinum Gray



140
Egyptian Shadow



142
Almond Biscotti



144
Raycroft Tan

Master Step Tile Collection



145
Casa Madrona



146
Buckskin



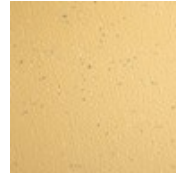
150
Sienna Sunset



155
Alfresco Brick



157
Copper Dust



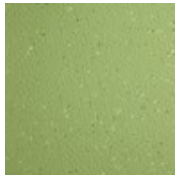
173
Golden Valley



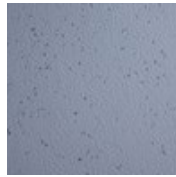
180
Aqua Teal



181
Green Mint



183
Lime Sorbet



190
Blue Willow



191
Night Sky