

**DESIGN**

Product Type:	Rubber
Gauge:	3.17MM (1/8")
Size:	35 11/16" x 35 11/16", 17 13/16"x17 13/16"
Anti-Microbial:	Yes
Installation:	Glue Down
Recommended Adhesive:	Mohawk AD777 - Regular Traffic, Mohawk 530SF - Heavy Rolling Loads, Mohawk 529SF - 2 Part Epoxy

**PERFORMANCE**

Construction:	Homogeneous
Classification:	ASTM F 1344 - Class 1, A or B
Smoke Density:	ASTM E 662 - ≤ 450
Static Load:	1,100 PSI (modified)
Abrasion Resistance:	ASTM D 3389 - <1 (H 18, 500g @ 1000 cycles)
Resistance To Chemicals:	ASTM F 925 - Compliance
Resistance To Heat:	ASTM F 1514 - ΔE < 8.0
Resistance To Light:	ASTM F 1515 - ΔE < 8.0 (300 hours)
Critical Radiant Flux:	ASTM E 648 - > 0.45

**SUSTAINABILITY**

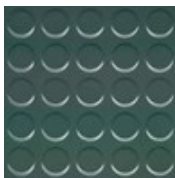
Rapidly Renewable Resource Content:	0%
Certification:	FloorScore® Certificate

**SERVICE**

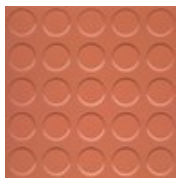
Warranties:	Limited 10 Year Commercial
-------------	----------------------------



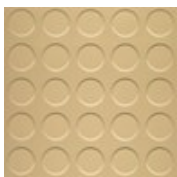
MCR123  
Midnight Charcoal



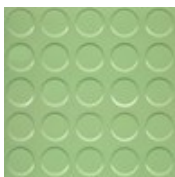
MCR137  
Carriage Gray



MCR150  
Sienna Sunset



MCR173  
Golden Valley



MCR183  
Lime Sorbet



MCR180  
Aqua Teal



MCR181  
Green Mint



MCR190  
Blue Willow

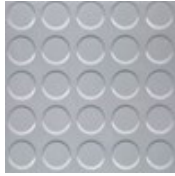


MCR191  
Night Sky

Master Step Tile Collection



MCR120  
Onyx Black



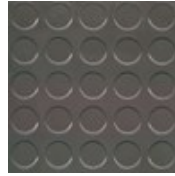
MCR133  
Polished Pewter



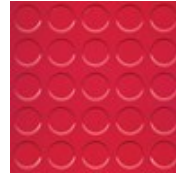
MCR134  
Platinum Gray



MCR140  
Sandstone Beige



MCR148  
Deep Chestnut



MCR152  
Cherry Red



MCR155  
Alfresco Brick