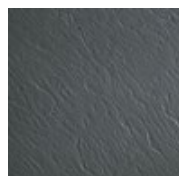


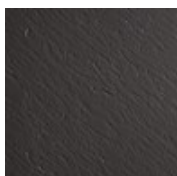
Master Step Tile Collection



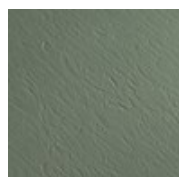
123
Midnight Charcoal



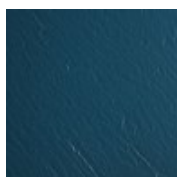
133
Polished Pewter



137
Carriage Gray



189
Emerald Luster



191
Night Sky

DESIGN

Product Type:	Rubber
Overall Thickness:	3.17 mm (1/8")
Size:	17 13/16"x17 13/16" (452mm x 452mm) 35 11/16" x 35 11/16" (905mm x 905mm)
Square Feet Per Carton:	17 13/16" x 17 13/16" = 44 sq. ft/ctn 35 11/16" x 35 11/16" = 8.84 sq. ft/ctn
Pieces Per Carton:	17 13/16" x 17 13/16" = 20 pcs/ctn 35 11/16" x 35 11/16" = 1 pc/ctn
Trim and Moldings:	Matching stair treads available
Installation Method:	Glue Down
Recommended Adhesive:	Mohawk Ad-777 Adhesive - Regular Traffic, Mohawk AD-535 Epoxy - Heavy Rolling Loads Under Patient Beds

PERFORMANCE

Construction:	Homogeneous
Classification:	ASTM F 1344 - Rubber Tile, Class 1, A or B
Static Load:	ASTM F 970 (modified at 1,100 psi) - ≤0.005"
Resistance To Chemicals:	ASTM F 925 - Complies (details upon request)
Resistance To Light:	ASTM F 1515 - ΔE ≤8.0
Resistance To Heat:	ASTM F 1514 - ΔE ≤8.0
Critical Radiant Flux:	ASTM E 648 - > 0.45
Smoke Density:	ASTM E 662 - ≤ 450
Static Coefficient of Friction:	ASTM D 2047 - ≥ 0.8

SUSTAINABILITY

Certification:	FloorScore® certified
----------------	-----------------------

SERVICE

Warranties:	Limited 10 Year Commercial
-------------	----------------------------