

Master Step Tile Collection



DESIGN

Product Type:	Rubber
Gauge:	3.17mm (1/8")
Size:	17 13/16"x17 13/16" (452mm x 452mm) 35 11/16" x 35 11/16" (905mm x 905mm)
Square Feet Per Carton:	17 16/16" x 17 13/16" = 44 sq. ft/ctn) 35 11/16" x 35 11/16" = 8.84 sq. ft/ctn
Pieces Per Carton:	17 16/16" x 17 13/16" = 20 pcs/ctn) 35 11/16" x 35 11/16" = 1 pc/ctn
Trim and Moldings:	Matching stair treads and cove base available
Installation Method:	Glue Down
Recommended Adhesive:	Mohawk Ad-777 Adhesive - Regular Traffic, Mohawk AD-535 Epoxy - Heavy Rolling Loads Under Patient Beds

PERFORMANCE

Construction:	Homogeneous
Classification:	ASTM F 1344 - Rubber Tile, Class 1, A or B
Static Load:	ASTM F 970 (modified at 1,100 psi) - ≤0.005"
Resistance To Chemicals:	ASTM F 925 - Complies (details upon request)
Resistance To Light:	ASTM F 1515 - ΔE ≤8.0
Resistance To Heat:	ASTM F 1514 - ΔE ≤8.0
Critical Radiant Flux:	ASTM E 648 - > 0.45
Smoke Density:	ASTM E 662 - ≤ 450
Static Coefficient of Friction:	ASTM D 2047 - ≥ 0.8

SUSTAINABILITY

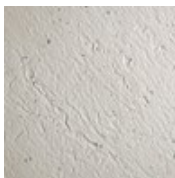
Certification:	FloorScore® certified SCS-FS-01492
Pre Consumer RC:	2%

SERVICE

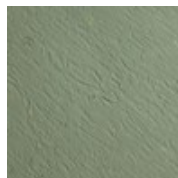
Warranties:	Limited 10 Year Commercial
-------------	----------------------------



101
Granite Falls



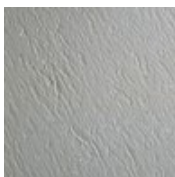
103
Silver Circle



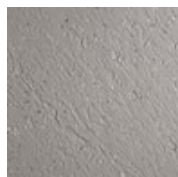
111
Emerald Isle



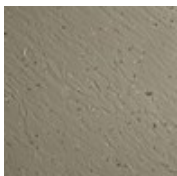
117
Whimsical White



130
Maltese Gray



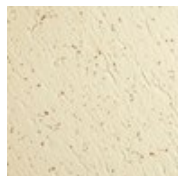
133
Polished Pewter



134
Platinum Gray



140
Egyptian Shadow



142
Almond Biscotti

Master Step Tile Collection



144
Raycroft Tan



145
Casa Madrona



146
Buckskin



150
Sierra Sunset



155
Alfresco Brick



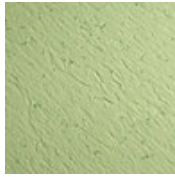
157
Copper Dust



173
Golden Valley



180
Aqua Teal



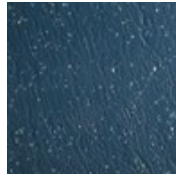
181
Green Mint



183
Lime Sorbet



190
Blue Willow



191
Night Sky