



DESIGN

Product Type:	Glue Down LVT
Gauge:	.12" (3mm)
Wear Layer:	30 mil (0.7mm)
Finish:	Commercial Grade Urethane
Size:	18" x 18"
Anti-Microbial:	No
Installation:	Glue Down
Recommended Adhesive:	M95.0 Acrylic, M700 Pressure Sensitive Adhesive
Square Feet Per Carton:	36 sf/ctn
Pieces Per Carton:	16 pcs/ctn
Underlayment:	Mohawk Accusound
Underlayment Adhesive:	Mohawk M950, M700 or Mohawk's MS160 spray adhesive

PERFORMANCE

Construction:	Heavy Commercial Grade Resilient Tile
Classification:	ASTM F1700 - Class III, Type A - Smooth, Type B - Embossed
Smoke Density:	ASTM E662 - < 450
Squareness:	ASTM F2055 - Passes - 0.010 in. max
Size and Tolerance:	ASTM F2055 - Passes - ±0.016 in. per linear foot
Dimensional Stability:	ASTM F2199 - Passes - ≤ 0.020 in. per linear foot
Thickness:	ASTM F386 - Passes - Nominal ±0.005 in.
Flexibility:	ASTM F137 - Passes - 1.0 inch mandrel, no cracks or breaks
Static Load:	ASTM F970 - Passes, modified - 2500 psi
Residual Indentation:	ASTM F1914 - Passes - Average less than 8%
Slip Resistance:	ASTM D2047 - Passes - > 0.6 Dry
Resistance To Chemicals:	ASTM F925 - Passes - No Change
Resistance To Heat:	ASTM F1514 - Passes - ΔE ≤ 8
Resistance To Light:	ASTM F1515 - Passes - ΔE ≤ 8
Critical Radiant Flux:	ASTM E648 - Passes - ≥ 0.45 watts/cm ² , Class 1

SUSTAINABILITY

Rapidly Renewable Resource Content:	0%
Certification:	FloorScore® Certificate

SERVICE

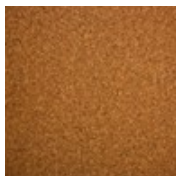
Warranties:	Limited 20 Year Commercial
-------------	----------------------------



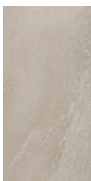
138 Sheer Linen



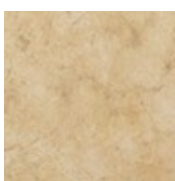
153 Adobe



241 Classic Cork



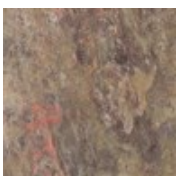
251 Sand



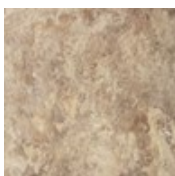
263 Beacon



358 Hearth



368 Basalt



372 Desert Glow

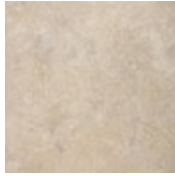


373 Rust

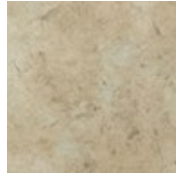
Trenta Collection



837
Oyster



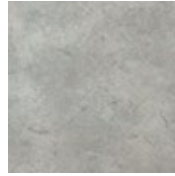
846
Fresco



868
Khaki



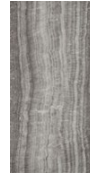
927
Nickel



928
River Rock



945
Silver Screen



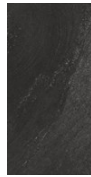
958
Windsor



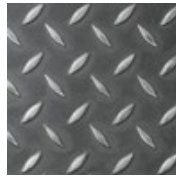
959
Cool Concrete



968
Flint



969
Meteor



987
Stallion