

TRUE Textured Tile Collection



**DESIGN**

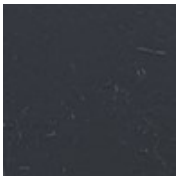
|                       |  |
|-----------------------|--|
| Product Type:         | Rubber   |
| Gauge:                | 3mm (0.188")   |
| Size:                 | 35 11/16" x 35 11/16" (905mm x 905mm), <br /> 13/16"x17 13/16" (452mm x 452mm)         |
| Installation Method:  | Glue Down  |
| Recommended Adhesive: | Mohawk Ad-777 Adhesive - Regular Traffic,<br>Mohawk AD-535 Epoxy - Heavy Rolling Loads |

**PERFORMANCE**

|                          |  |
|--------------------------|--|
| Construction:            | Homogeneous  |
| Classification:          | ASTM F 1344 - Rubber Tile, Class 1, A or B         |
| Hardness:                | ASTM D 2240 - Shore A $\geq$ 85                    |
| Static Load:             | ASTM F 970 (modified at 1,000 psi) - $\leq$ 0.005" |
| Abrasion Resistance:     | ASTM D 3389 - Passes (H 18, 500g @ 1000 cycles)    |
| Resistance To Chemicals: | ASTM F 925 - Exceeds                               |
| Resistance To Light:     | ASTM F 1515 - $\Delta E \leq$ 8.0                  |
| Resistance To Heat:      | ASTM F 1514 - $\Delta E \leq$ 8.0                  |
| Critical Radiant Flux:   | ASTM E 648 - $>$ 0.45                              |
| Smoke Density:           | ASTM E 662 - $\leq$ 450                            |

**SUSTAINABILITY**

|                  |                       |
|------------------|-----------------------|
| Certification:   | FloorScore® certified |
| Pre Consumer RC: | 10%                   |



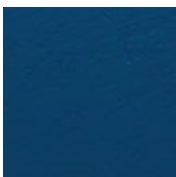
32  
Coal



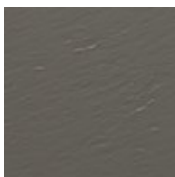
63  
Buff



85  
Latte



89  
Blue Spring



93  
In-Service