

TRUE Textured Tile Collection



### DESIGN

Product Type:	Rubber
Gauge:	3mm (0.188")
Size:	17 13/16"x17 13/16" (452mm x 452mm) 35 11/16" x 35 11/16" (905mm x 905mm)
Installation Method:	Glue Down
Recommended Adhesive:	Mohawk Ad-777 Adhesive - Regular Traffic, Mohawk AD-535 Epoxy - Heavy Rolling Loads

### PERFORMANCE

Construction:	Homogeneous
Classification:	ASTM F 1344 - Rubber Tile, Class 1, A or B
Hardness:	ASTM D 2240 - Shore A $\geq$ 85
Static Load:	ASTM F 970 (modified at 1,000 psi) - $\leq$ 0.005"
Abrasion Resistance:	ASTM D 3389 - Passes (H 18, 500g @ 1000 cycles)
Resistance To Chemicals:	ASTM F 925 - Exceeds
Resistance To Light:	ASTM F 1515 - $\Delta E \leq$ 8.0
Resistance To Heat:	ASTM F 1514 - $\Delta E \leq$ 8.0
Critical Radiant Flux:	ASTM E 648 - $>$ 0.45
Smoke Density:	ASTM E 662 - $\leq$ 450

### SUSTAINABILITY

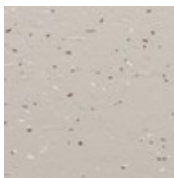
Certification:	FloorScore® certified
Pre Consumer RC:	10%

### SERVICE

Warranties:	Limited 10 Year Commercial, Limited 10 Year Colorfast Warranty
-------------	--



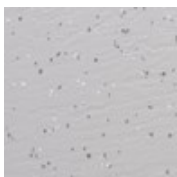
02  
Night Skies



03  
Sand Bar



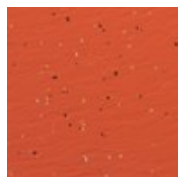
09  
Bubbles



13  
Pebble



14  
Canvas



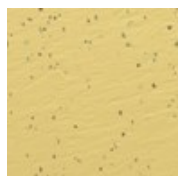
15  
Cloak



23  
Mountain Path

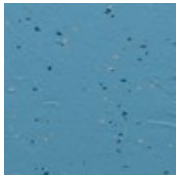


25  
Pottery Clay



27  
Lemon Icebox

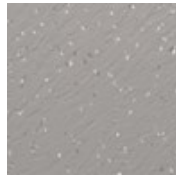
TRUE Textured Tile Collection



29  
Gemstone



32  
Coal



33  
Dried Coral



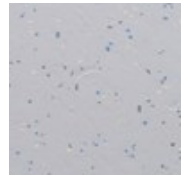
35  
Roma



37  
Cheddar



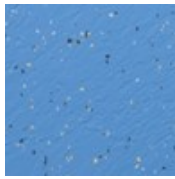
38  
Green Apple



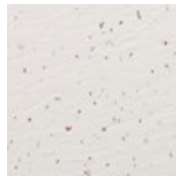
43  
Freeze



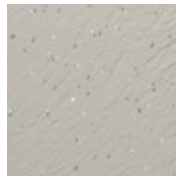
47  
Warm Sunshine



49  
Delphinium



51  
Hail Storm



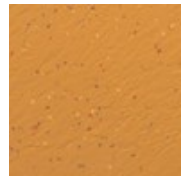
53  
Dove



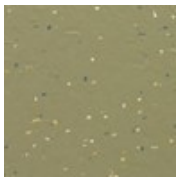
54  
Grain



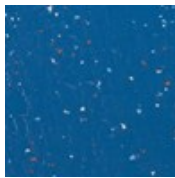
55  
Red Hot



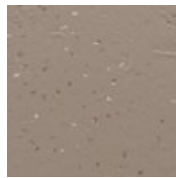
57  
Orange Sherbet



58  
Chartreuse



59  
Iris



63  
Buff



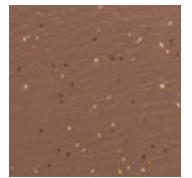
65  
Grape Vine



66  
Impatience



73  
Aircraft Carrier



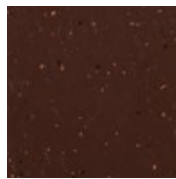
75  
Pecan



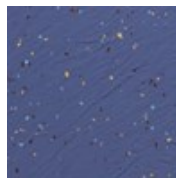
78  
Spring Valley



83  
Gunmetal



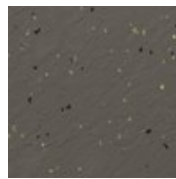
85  
Latte



86  
Violet



89  
Blue Spring



93  
In-Service