



DESIGN

Product Type:	Glue Down LVT
Gauge:	0.118" (3mm)
Wear Layer:	20 mil
Finish:	M-Force Enhanced Urethane
Size:	18" x 36"
Anti-Microbial:	No
Installation:	Glue Down
Recommended Adhesive:	M95.0 Acrylic, MS160 Spray, M700 Pressure Sensitive Adhesive
Square Feet Per Carton:	36 sf/ctn (3.34 m ² /ctn)
Pieces Per Carton:	8 pcs/ctn
Pounds per carton:	42 lbs/ctn (19.05 kg/ctn)
Underlayment:	Mohawk Accusound
Underlayment Adhesive:	Mohawk M950, M700 or Mohawk's MS160 spray adhesive

PERFORMANCE

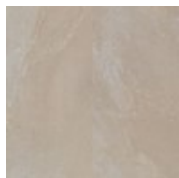
Construction:	Commercial Grade Resilient Tile
Classification:	ASTM F1700 - Class III, Type A - Smooth, Type B - Embossed
Smoke Density:	ASTM E662 - Passes - < 450
Squareness:	ASTM F2055 - Passes - 0.010 in. max
Size and Tolerance:	ASTM F2055 - Passes - ±0.016 in. per linear foot
Dimensional Stability:	ASTM F2199 - Passes - ≤ 0.020 in. per linear foot
Thickness:	ASTM F386 - Passes - As specified ±0.005 in.
Static Load:	ASTM F970 - Passes, modified - 1500 psi
Residual Indentation:	ASTM F1914 - Passes - Average less than 8%
Slip Resistance:	ASTM D2047 - Passes - > 0.6 Wet, 0.6 Dry
Resistance To Chemicals:	ASTM F925 - Passes - No Change
Resistance To Heat:	ASTM F1514 - Passes - ΔE ≤ 8
Resistance To Light:	ASTM F1515 - Passes - ΔE ≤ 8
Critical Radiant Flux:	ASTM E648 - Passes - ≥ 0.45 watts/cm ² , Class 1

SUSTAINABILITY

Rapidly Renewable Resource Content:	0%
Certification:	FloorScore® Certified

SERVICE

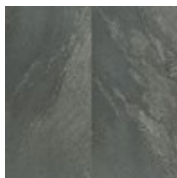
Warranties:	Limited 10 Year Commercial
-------------	----------------------------



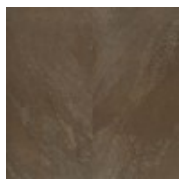
T002M
Sea Salt



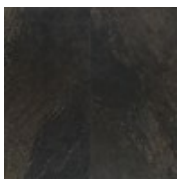
T003M
Tea Tin



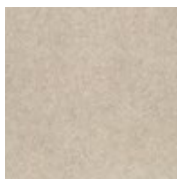
T005M
Earl Gray



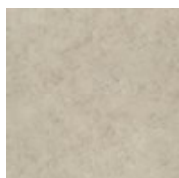
T001M
Bronze Kona



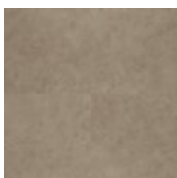
T004M
Cast Iron



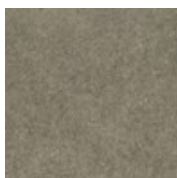
T007M
Pearl Cloud



T016M
Artisan White



T012M
Light Mocha

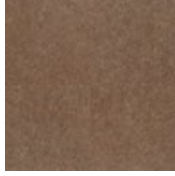


T010M
Imperial Gray

Select Step Collection



T014M
Thai Mountain



T009M
Azteca