



**DESIGN**

Tufted Pile Weight:	<b>37.0 oz. per sq. yd. (1,255 g/m<sup>2</sup>)</b>
Product Type:	<b>Tile</b>
Construction:	<b>Tufted</b>
Minimum Sq. Yd.:	<b>No Minimum</b>
Surface Texture:	<b>Textured Patterned Loop</b>
Gauge:	<b>1/12 (47.00 rows per 10 cm)</b>
Density:	<b>11,100</b>
Weight Density:	<b>410,700</b>
Stitches Per Inch:	<b>8.0 (31.50 per 10 cm)</b>
Finished Pile Thickness:	<b>.120" (3.05 mm)</b>
Dye Method:	<b>Solution Dyed / Yarn Dyed</b>
Backing Material:	<b>EcoFlex NXT</b>
Fiber Type:	<b>Duracolor® Premium Nylon</b>
Fiber Technology:	<b>Duracolor® by Mohawk Group's Stain Resistant System. Passes GSA requirements for permanent stain resistant carpet.</b>
Pattern Repeat:	<b>Not Applicable</b>
Size:	<b>24" x 24" (.6096 m x .6096 m)</b>
Installation Method:	<b>Quarter Turn, Monolithic, Vertical Ashlar, Brick Ashlar, Multi Directional</b>
GSA Stain Release Rating:	<b>Pass</b>
Stain Release Technology:	<b>Permanent, Built into Fiber</b>
Soil Release Technology:	<b>EcoSentry Soil Protection</b>
Foot Traffic Recommendation TARR:	<b>Severe</b>

**SUSTAINABILITY**

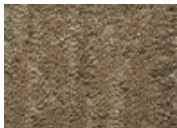
IAQ Green Label Plus:	<b>CRI Green Label Plus GLP1171</b>
Pre-Consumer Recycled Content:	<b>55%</b>
NSF 140:	<b>EcoFlex NXT - NSF 140 Gold</b>
Declare Label:	<b>Declared Red List Free</b>

**PERFORMANCE**

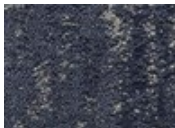
Static:	<b>AATCC-134 Under 3.5 KV</b>
Flammability:	<b>ASTM E 648 Class 1 (Glue Down)</b>
Smoke Density:	<b>ASTM E 662 Less than 450</b>

**SERVICE**

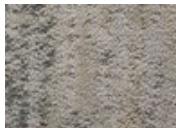
Warranties:	<b>Lifetime Limited Carpet Tile Warranty, Lifetime Duracolor Stain Warranty, Lifetime Static</b>
-------------	--



251  
Solstice



575  
Blueshift



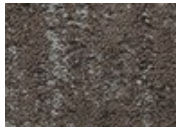
729  
Heavenly



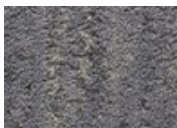
859  
Ethereal



868  
Stellar



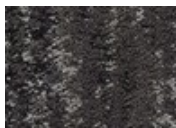
889  
Thunder



935  
Meteorite



979  
Grey Shadow



989  
Eclipse