



**DESIGN**

Tufted Pile Weight:	<b>40 oz/yd<sup>2</sup> (1356 g/m<sup>2</sup>)</b>
Product Type:	<b>Tile</b>
Construction:	<b>Tufted</b>
Minimum Sq. Yd.:	<b>No Minimum</b>
Surface Texture:	<b>Textured Patterned Loop</b>
Gauge:	<b>1/12 (47.00 rows per 10 cm)</b>
Density:	<b>9,113</b>
Weight Density:	<b>364,250</b>
Stitches Per Inch:	<b>15.0 (59.05 per 10 cm)</b>
Finished Pile Thickness:	<b>.158" (4.01 mm)</b>
Dye Method:	<b>Solution Dyed</b>
Backing Material:	<b>EcoFlex NXT</b>
Fiber Type:	<b>Duracolor® Premium Nylon</b>
Fiber Technology:	<b>Duracolor® by Mohawk Group's Stain Resistant System. Passes GSA requirements for permanent stain resistant carpet.</b>
Pattern Repeat:	<b>Not Applicable</b>
Size:	<b>24" x 24" (.6096 m x .6096 m)</b>
Installation Method:	<b>Brick Ashlar, Vertical Ashlar, Quarter Turn, Monolithic, Multi Directional</b>
GSA Stain Release Rating:	<b>Pass</b>
Stain Release Technology:	<b>Permanent, Built into Fiber</b>
Soil Release Technology:	<b>EcoSentry Soil Protection</b>
Foot Traffic Recommendation TARR:	<b>Heavy</b>

**SUSTAINABILITY**

IAQ Green Label Plus:	<b>CRI Green Label Plus GLP1171</b>
Pre-Consumer Recycled Content:	<b>55%</b>
NSF 140:	<b>EcoFlex NXT - NSF 140 Gold</b>
Declare Label:	<b>Declared Red List Free</b>

**PERFORMANCE**

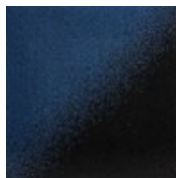
Static:	<b>AATCC-134 Under 3.5 KV</b>
Flammability:	<b>ASTM E 648 Class 1 (Glue Down)</b>
Smoke Density:	<b>ASTM E 662 Less than 450</b>

**SERVICE**

Warranties:	<b>Lifetime Limited Carpet Tile Warranty, Lifetime Duracolor Stain Warranty, Lifetime Static</b>
-------------	--



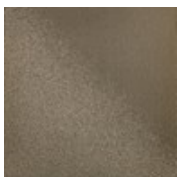
575  
Navy



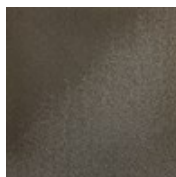
589  
Black Navy



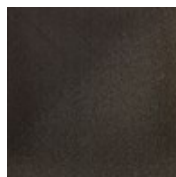
667  
Green Light Grey



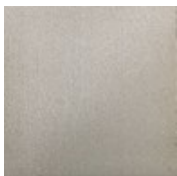
846  
Teak



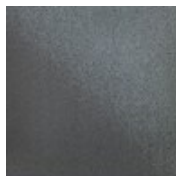
869  
Medium Taupe



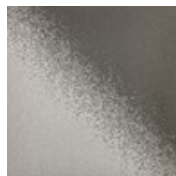
889  
Dark Taupe



929  
Light Grey



955  
Medium Cool Grey



959  
Grey Light Grey

Topography Collection

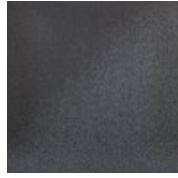
Karastan



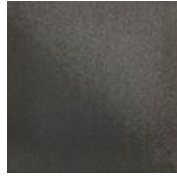
968  
Medium Grey



979  
Black



985  
Dark Cool Grey



989  
Dark Grey